

**Amadori**  
catalogue

Amadori

**Amadori**

# Amadori, wholesome protein for all

# Amadori



Founded in 1969, Amadori today is an **industry leader in Italy's food industry**. Poultry specialists from the start, we now offer a **wide variety of innovative products across the spectrum of proteins**, from white and red meat to plant-based proteins.

**An integrated, carefully managed value chain is at the heart of our success.** The core of our operations at Amadori is focused on managing the entire value chain of chicken and turkey, as we oversee the entire production process to ensure it meets the highest standards of **safety, traceability and quality**.

**We take care of every detail**, from farm to table and from our people to the environment as a whole, with a particular emphasis on our community of some **9,000 employees**.

At Amadori, our corporate culture is founded on **strong values**, on our passion for a job well done, on transparency, and on our ability to **respect traditions while innovating for the future**.

This is what we do each and every day as **we strive to keep pace with changing tastes and preferences**, as well as the **evolving habits and culture of our customers**, as we give you the pleasure of enriching every moment with **delicious, versatile foods** for all who enjoy a **varied, balanced diet** and place the utmost importance on quality in your buying decisions.

## IN NUMBERS



**18**  
Production sites



roughly  
**800**  
Farms



**16**  
Distribution centres



roughly  
**9.000**  
employees



**2.000**  
different products

Our products, the pleasure of choice

**Amadori**



For all who appreciate good food and like to stay in shape at any age, for those who love the classics but also like to experiment in the kitchen, for those who savour those special moments in life, and for those who enjoy sharing a tasty morsel, there's Amadori.

With our wide selection of quality fresh and frozen foods, whether you're looking for meat for plant-based proteins, you're sure to find the right dish for any occasion with the confidence you get from an organization that manages production, sales and distribution efficiently and has the technology and capabilities it takes to meet the needs of the largest base of retail outlets in the shortest amount of time.

At Amadori, we make sure everyone is happy with our products, whether you're selling them in your store or taking them home to your family.

Amadori BIO organics	6	Ready to-heat	52
Il Campese	10	Vegetable specialities	54
Qualità 10+	14	Veggy	56
Qualità 10+ chicken	16	Roasted meats	60
Qualità 10+ turkey	22	Frankfurters	64
Qualità 10+ uncooked specialities	24	Traditional	70
Qualità 10+ breaded	25	Other poultry and rabbit	78
Tocco da Chef	26	Eggs	82
Uncooked specialities	28	Frozen foods	90
Uncooked pork	38	Mister Meat	106
Buona Domenica	40	Baraka Halal	126
Breaded	44	Corte Antica	132

# Amadori bio

organics



For all who love quality foods, Amadori Bio organics is 100% Italian, free-range chicken, raised without antibiotics and fed exclusively on organically-grown legumes and grains, including wheat, corn, sorghum and soya. Our organic chicken comes in the most traditional cuts and in flavourful specialities, including ground-chicken patties and meatballs.

Our Value Chain CONTROLLED FOOD PRODUCTION



# Bio organics



**Thin-sliced chicken breast BIO** R

	EAN Code	Approx. package kg	Pieces per package	Packages per carton	Approx. carton weight (kg)	Shelf life (days)
16802	2986338000000	0,3	3	6	1,8	11



**Chicken tenderloin BIO** R

	EAN Code	Approx. package kg	Pieces per package	Packages per carton	Approx. carton weight (kg)	Shelf life (days)
16803	2567113000000	0,33	5	6	1,98	10



**Chicken drumsticks x2 BIO** R

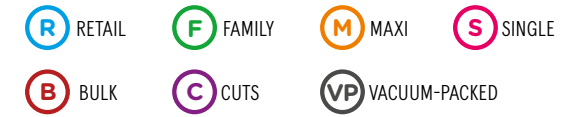
	EAN Code	Approx. package kg	Pieces per package	Packages per carton	Approx. carton weight (kg)	Shelf life (days)
16800	2794232000000	0,4	2	6	2,4	11



**Chicken thigh x2 BIO** R

	EAN Code	Approx. package kg	Pieces per package	Packages per carton	Approx. carton weight (kg)	Shelf life (days)
16801	2369511000000	0,55	2	6	3,3	10

# Bio organics



**Chicken burgers BIO 100g x2**



	EAN Code	Approx. package kg	Pieces per package	Packages per carton	Approx. carton weight (kg)	Shelf life (days)
16840	8006473905981	0,2	2	6	1,20	9



**Chicken metaballs BIO**



	EAN Code	Approx. package kg	Pieces per package	Packages per carton	Approx. carton weight (kg)	Shelf life (days)
16805	8006473904304	0,24	12	6	1,44	9

**Whole Chicken fr a x2 BIO cf**



	EAN Code	Approx. package kg	Pieces per package	Packages per carton	Approx. carton weight (kg)	Shelf life (days)
16825	2633235000000	3,2	1	2	6,4	10

## Vacuum references



	Description	Approx. package kg	Pieces per package	Packages per carton	Approx. carton weight (kg)	Shelf life (days)
16806	Boneless chicken breast cuts BIO, vac pack	1,8	4	2	3,6	20
16808	Chicken leg BIO, vac pack	2,4	5	2	4,8	20
16858	Chicken pieces BIO, vac pack	1,5	83	2	3	15
16810	Chicken drumsticks BIO, vac pack	2,1	10	2	4,2	20
16813	Whole untucked chicken x4 BIO	12	4	1	12	12
16809	Chicken thigh BIO, vac pack	2,8	10	2	5,6	20
16807	Sliced chicken breast BIO, vac pack	1	10	2	2	20





Amadori

bio

2 polli integri e  
alimento per animali  
di allevamento  
certificati e controllati  
in ogni fase di produzione

Amadori

bio

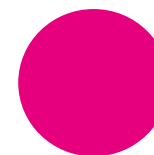
2 polli integri e  
alimento per animali  
di allevamento  
certificati e controllati  
in ogni fase di produzione

Amadori bio



# IL CAMPESSE AMADORI ECCELLENZA ITALIANA

Il Campese nasce nel 2001 da un'intuizione di Francesco Amadori e rappresenta oggi una **filiere d'eccellenza**. Si tratta di un pollo allevato **all'aperto e senza l'uso di antibiotici**. Viene allevato in territori particolarmente favorevoli caratterizzati da dolci colline e clima mite. Ha una dieta vegetale e bilanciata a base di mais, grano, orzo, altri cereali e soia. Rigorosamente senza OGM. Il Campese è libero di razzolare in ampi spazi aperti e ricchi di vegetazione, sviluppando così una muscolatura delineata e consistente che dà origine ad un gusto riconoscibile. La sua carne è infatti soda e saporita ed ha un'ottima resa in cottura.



**ALLEVATO ALL'APERTO**

**CARNE SODA E SAPORITA**

**SENZA USO DI ANTIBIOTICI**



# Il Campese

- R RETAIL
- F FAMILY
- M MAXI
- S SINGLE
- B BULK
- C CUTS
- VP VACUUM-PACKED



**Whole Chicken**



	EAN Code	Approx. package kg	Pieces per package	Packages per carton	Approx. carton weight (kg)	Shelf life (days)
16080	2521600	1,025	1	4	4,1	9



**Chicken pieces**



	EAN Code	Approx. package kg	Pieces per package	Packages per carton	Approx. carton weight (kg)	Shelf life (days)
16924	2612597000000	0,55	6	4	2,2	9



**Fusi**



	Codice EAN	Peso conf. kg ca.	Pzi per conf.	Conf. per cassa	Peso cassa kg ca.	Shelf life (gg)
76374	2594081000000	0,40	3	6	2,4	9

**NOVITÀ!**



**Sovracosce**



	Codice EAN	Peso conf. kg ca.	Pzi per conf.	Conf. per cassa	Peso cassa kg ca.	Shelf life (gg)
76373	2428635000000	0,45	4	6	2,7	9



**Aromatised butterfly chicken thighs**



	EAN Code	Approx. package kg	Pieces per package	Packages per carton	Approx. carton weight (kg)	Shelf life (days)
16925	8006473905158	0,25	3	6	1,5	9



**Chicken tenders**



	EAN Code	Approx. package kg	Pieces per package	Packages per carton	Approx. carton weight (kg)	Shelf life (days)
16926	8006473905141	0,30	16	6	1,8	9

# Il Campese

- R RETAIL
- F FAMILY
- M MAXI
- S SINGLE
- B BULK
- C CUTS
- VP VACUUM-PACKED



**Cosciotto x3**



	EAN Code	Approx. package kg	Pieces per package	Packages per carton	Approx. carton weight (kg)	Shelf life (days)
76366	xxx	xxx	xxx	4	xxx	xxx



**Pol coscia max II Campese Paprika**

	EAN Code	Approx. package kg	Pieces per package	Packages per carton	Approx. carton weight (kg)	Shelf life (days)
76375	xxx	xxx	xxx	x	xxx	xxx



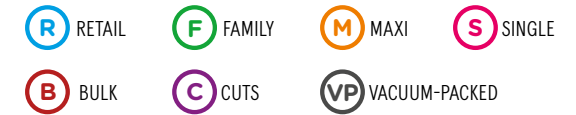
**Chicken wings, cooked**



	EAN Code	Approx. package kg	Pieces per package	Packages per carton	Approx. carton weight (kg)	Shelf life (days)
41306	1654950000000	1	29	4	4	17



# Il Campese



## Chicken breast



	Description	Approx. package kg	Pieces per package	Packages per carton	Approx. carton weight (kg)	Shelf life (days)
16007	Free-range chicken breast maxi	2,4	9	4	9,6	12



## Chicken Thigh



	Description	Approx. package kg	Pieces per package	Packages per carton	Approx. carton weight (kg)	Shelf life (days)
16008	Free-range chicken thigh	2,6	10	2	5,2	10
16091	Free-range chicken thigh seasoned	1,56	6	4	6,24	10



## Whole chicken



	Description	Approx. package kg	Pieces per package	Packages per carton	Approx. carton weight (kg)	Shelf life (days)
16012	Whole, free-range seasoned chicken, in units	1,25	1	10	12,5	11
16010	Free-range, whole roast chicken fr a	1,25	9	1	11,25	12
16013	Free-range, whole seasoned chicken fr a	1,25	1	10	12,50	11
16009	Free-range, whole chicken, 1000g fr a	0,99	10	1	9,875	12
16913	Free-range, whole chicken, 1,5 fr a	1,25	8	1	11,6	12
16015	Free-range, whole chicken x8 fr a	1,55	8	1	12,40	12
16014	Free-range, whole chicken, dissected fr a	1,90	6	1	11,40	12



## Chicken wings



	Description	Approx. package kg	Pieces per package	Packages per carton	Approx. carton weight (kg)	Shelf life (days)
16019	Free-range chicken wings maxi	2,5	23	2	5	9



## Free-range whole chicken, cooked



	EAN Code	Approx. package kg	Pieces per package	Packages per carton	Approx. carton weight (kg)	Shelf life (days)
41311	-	1,6	2	4	6,4	20



## Whole chicken x5, giblets



	Description	Approx. package kg	Pieces per package	Packages per carton	Approx. carton weight (kg)	Shelf life (days)
16017	Free-range chicken x5 with head and legs, giblets removed fr a	10	5	1	10	12

# Amadori

## QUALITÀ 10<sup>+</sup>

A broad line of products featuring 100% Italian chicken and turkey raised on GMO-free, plant-based feed and without antibiotics. Our Qualità 10+ line includes something for every taste and preference, from the more traditional cuts of meat to practical, delicious products that are ready to serve in just a few minutes.

Our Value Chain  
CONTROLLED FOOD PRODUCTION



# Qualità 10+ chicken

- R RETAIL
- F FAMILY
- M MAXI
- S SINGLE
- B BULK
- C CUTS
- VP VACUUM-PACKED

# QUALITÀ 10+



**100% ITALIAN CHICKEN**

**RAISED WITHOUT  
ANTIBIOTICS**

Fed with a vegetal and  
NO OGM feed

● Plant-based, GMO-free feed

## FIXED WEIGHT



**Thin-sliced chicken breast**



	EAN Code	Approx. package kg	Pieces per package	Packages per carton	Approx. carton weight (kg)	Shelf life (days)
16247	8006473904243	0,25	6	9	2,25	11

## FIXED WEIGHT



**Sliced chicken breast**



UM	EAN Code	Approx. package kg	Pieces per package	Packages per carton	Approx. carton weight (kg)	Shelf life (days)
nr	8006473901693	0,40	5	9	3,6	11

## FIXED WEIGHT



**Tenerelle chicken thigh 10+ AF std**



	EAN Code	Approx. package kg	Pieces per package	Packages per carton	Approx. carton weight (kg)	Shelf life (days)
16219	8006473906261	0,30	3	8	2,40	11

## FIXED WEIGHT



**Chicken thigh**



UM	EAN Code	Approx. package kg	Pieces per package	Packages per carton	Approx. carton weight (kg)	Shelf life (days)
nr	8006473901716	0,50	3	6	3,00	11

# Qualità 10+ chicken



## FIXED WEIGHT



**Chicken tenderloin**



UM	EAN Code	Approx. package kg	Pieces per package	Packages per carton	Approx. carton weight (kg)	Shelf life (days)
16254	nr 8006473901723	0,40	6	8	3,20	11

## FIXED WEIGHT



**Chicken thigh without skin**



EAN Code	Approx. package kg	Pieces per package	Packages per carton	Approx. carton weight (kg)	Shelf life (days)
16248 8006473904250	0,45	3	6	2,7	7

## FIXED WEIGHT



**Chicken drumsticks**



UM	EAN Code	Approx. package kg	Pieces per package	Packages per carton	Approx. carton weight (kg)	Shelf life (days)
16251	nr 8006473901709	0,45	3	6	2,70	11

## FIXED WEIGHT



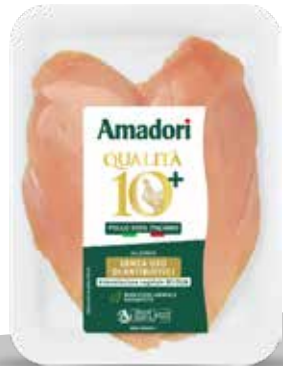
**Chicken wings**



EAN Code	Approx. package kg	Pieces per package	Packages per carton	Approx. carton weight (kg)	Shelf life (days)
16249 8006473904267	0,55	5	8	4,4	11



# Qualità 10+ chicken



**Chicken breast x1**



	EAN Code	Approx. package kg	Pieces per package	Packages per carton	Approx. carton weight (kg)	Shelf life (days)
16023	2265000	0,5	1	8	4	9



**Sliced chicken breast**



	EAN Code	Approx. package kg	Pieces per package	Packages per carton	Approx. carton weight (kg)	Shelf life (days)
16200	2522780	0,35	3	10	3,5	9
16086	2269032	0,30	3	10	3,00	9
16149						



**Sliced chicken breast**



	EAN Code	Approx. package kg	Pieces per package	Packages per carton	Approx. carton weight (kg)	Shelf life (days)
16047	2265650	0,70	7	9	6,30	9



**Sliced chicken breast**



	EAN Code	Approx. package kg	Pieces per package	Packages per carton	Approx. carton weight (kg)	Shelf life (days)
16165	2702462000000	0,99	11	4	3,96	8



**Chicken breast**



	Description	Approx. package kg	Pieces per package	Packages per carton	Approx. carton weight (kg)	Shelf life (days)
16115	Pol petto extra 10epiu'	3,00	6	4	12,00	12



**Thin-sliced chicken breast**



	EAN Code	Approx. package kg	Pieces per package	Packages per carton	Approx. carton weight (kg)	Shelf life (days)
16162	2350936	0,24	5	10	2,4	9

# Qualità 10+ chicken

R RETAIL    F FAMILY    M MAXI    S SINGLE  
B BULK    C CUTS    VP VACUUM-PACKED



**Pol petto lobo x10epiu' AF** R

	EAN Code	Approx. package kg	Pieces per package	Packages per carton	Approx. carton weight (kg)	Shelf life (days)
16220	2575788000000	0,23	1	8	1,84	9



**Scosciotte - sliced deboned chicken thighs** R

	Description	Approx. package kg	Pieces per package	Packages per carton	Approx. carton weight (kg)	Shelf life (days)
16092	Sliced deboned chicken thighs 10+	0,4	3	8	3,20	7



**Chicken leg quarter, medium** M

	EAN Code	Approx. package kg	Pieces per package	Packages per carton	Approx. carton weight (kg)	Shelf life (days)
16041	2522730	2,80	8	4	11,20	9



**Chicken thigh pieces** R

	EAN Code	Approx. package kg	Pieces per package	Packages per carton	Approx. carton weight (kg)	Shelf life (days)
16029	2521330	0,84	3	5	4,20	9



**Chicken leg quarter** R

	EAN Code	Approx. package kg	Pieces per package	Packages per carton	Approx. carton weight (kg)	Shelf life (days)
16202 SP	2265180	0,80	2	5	4,00	9
16028	2265270	0,56	2	6	3,36	9



**Whole chicken leg, aromatised** M

	Description	Approx. package kg	Pieces per package	Packages per carton	Approx. carton weight (kg)	Shelf life (days)
16241	Whole 10+ chicken leg x 2, aromatised	2,8	7	2	5,6	10

# Qualità 10+ chicken



**Chicken thigh y - x3 - 10+ AF**



	EAN Code	Approx. package kg	Pieces per package	Packages per carton	Approx. carton weight (kg)	Shelf life (days)
<b>16205 SP</b>	2265480	0,42	3	6	2,52	9



**Chicken thigh x4 - 10+ AF**



	EAN Code	Approx. package kg	Pieces per package	Packages per carton	Approx. carton weight (kg)	Shelf life (days)
<b>16217</b>	2265480	0,72	4	8	5,76	8



**Chicken thigh**



	EAN Code	Approx. package kg	Pieces per package	Packages per carton	Approx. carton weight (kg)	Shelf life (days)
<b>16033</b>	2265510000000	0,84	6	10	8,40	9
<b>16034</b>	2265510000000	1,02	6	6	6,12	9



**Chicken thigh**



	EAN Code	Approx. package kg	Pieces per package	Packages per carton	Approx. carton weight (kg)	Shelf life (days)
<b>16045</b>	2265330000000	1,50	8	4	6,00	9



**Chicken thigh without skin**



	EAN Code	Approx. package kg	Pieces per package	Packages per carton	Approx. carton weight (kg)	Shelf life (days)
<b>16074</b>	2521262000000	0,5	3	8	4	9



**Chicken drumsticks Y pi- x3 - 10+ AF**



	EAN Code	Approx. package kg	Pieces per package	Packages per carton	Approx. carton weight (kg)	Shelf life (days)
<b>16207 SP</b>	2265360000000	0,45	3	6	2,7	9

# Qualità 10+ chicken



**Chicken drumsticks x4 - 10+ AF**



	EAN Code	Approx. package kg	Pieces per package	Packages per carton	Approx. carton weight (kg)	Shelf life (days)
16218	2265360	0,6	4	8	4,8	9



**Chicken drumsticks**



	EAN Code	Approx. package kg	Pieces per package	Packages per carton	Approx. carton weight (kg)	Shelf life (days)
16031	2265390	0,78	6	10	7,80	9



**Chicken drumsticks**



	EAN Code	Approx. package kg	Pieces per package	Packages per carton	Approx. carton weight (kg)	Shelf life (days)
16044	2265240	1,45	9	4	5,80	9



**Chicken wings**



	EAN Code	Approx. package kg	Pieces per package	Packages per carton	Approx. carton weight (kg)	Shelf life (days)
16035	2265060	0,675	6	8	5,4	9



**Chicken wings**



	Description	Approx. package kg	Pieces per package	Packages per carton	Approx. carton weight (kg)	Shelf life (days)
16128	10+ chicken wings, maxi	2,25	25	2	4,50	9

# Qualità 10+ chicken



## Whole spatchcock chicken



UM	EAN Code	Approx. package kg	Pieces per package	Packages per carton	Approx. carton weight (kg)	Shelf life (days)
16050	nr 2266270000000	1	1	6	6	9

## Whole chicken to dissect x6, 10+ fr a



EAN Code	Approx. package kg	Pieces per package	Packages per carton	Approx. carton weight (kg)	Shelf life (days)	
16141	-	11,4	6	1	11,4	12

## Chicken 10+, vacuum pack



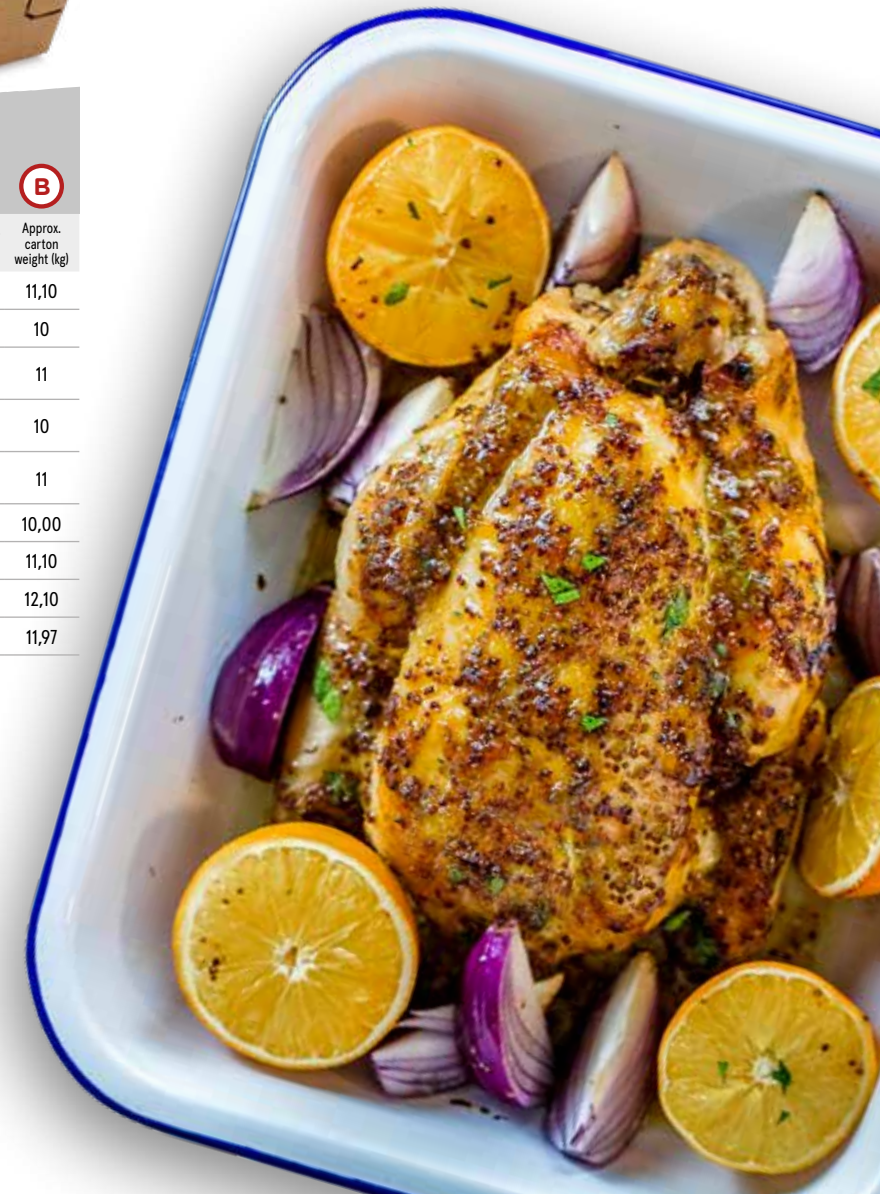
Description	Approx. package kg	Pieces per package	Packages per carton	Approx. carton weight (kg)	Shelf life (days)
16180 Boneless chicken breast 10+ AF, vac pack	1,2	5	2	2,4	20
16565 Sliced chicken breast 10+ AF, vac pack	1	10	2	2	20
16181 Chicken legs 10+ AF 255-295 g, vac pack	2,75	10	2	5,5	20
16183 Chicken thigh 10+ AF 150-180 g, vac pack	1,32	8	3	3,96	20
16182 Chicken drumsticks 10+ AF 140-170 g, vac pack	1,24	8	3	3,72	20



## Rotisserie chicken



Description	Approx. package kg	Packages per carton	Approx. carton weight (kg)
10241 10+ Whole Chicken seasoned AF 1100	1,11	10	11,10
10243 10+ Whole Chicken seasoned AF 1000	1	10	10
10246 10+ Whole Chicken seasoned AF 1100 num	1,10	10	11
10247 10+ Whole Chicken seasoned AF 1000 num	1	10	10
10248 10+ Whole Chicken seasoned AF 1100 num (b+s)	1,10	10	11
16105 10+ Whole chicken 1000	1,00	10	10,00
16106 10+ Whole chicken 1100	1,11	10	11,10
16107 10+ Whole chicken 1200	1,21	10	12,10
16108 10+ Whole chicken 1300	1,33	9	11,97



# Qualità 10+ turkey

- R RETAIL
- F FAMILY
- M MAXI
- S SINGLE
- B BULK
- C CUTS
- VP VACUUM-PACKED

# QUALITÀ 10+



**100% ITALIAN TURKEY**

**RAISED WITHOUT  
ANTIBIOTICS**

Fed with a vegetal and  
NO OGM feed

Plant-based, GMO-free feed

## FIXED WEIGHT



**Sliced turkey breast**



UM	EAN Code	Approx. package kg	Pieces per package	Packages per carton	Approx. carton weight (kg)	Shelf life (days)
16270 nr	8006473901686	0,4	5	9	3,6	11



**Thin-sliced turkey breast**



EAN Code	Approx. package kg	Pieces per package	Packages per carton	Approx. carton weight (kg)	Shelf life (days)
16554 2817787	0,27	6	10	2,7	9



**Sliced turkey breast**



EAN Code	Approx. package kg	Pieces per package	Packages per carton	Approx. carton weight (kg)	Shelf life (days)
16551 SP 2265720	0,25	3	9	2,25	9



**Sliced turkey breast**



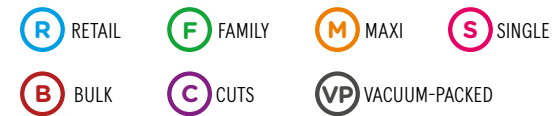
EAN Code	Approx. package kg	Pieces per package	Packages per carton	Approx. carton weight (kg)	Shelf life (days)
16502 2521220	0,70	7	9	6,30	9

**Sliced turkey breast**



Description	Approx. package kg	Pieces per package	Packages per carton	Approx. carton weight (kg)	Shelf life (days)
16607 10+ sliced turkey breast, maxi	2,50	25	4	10,00	10

# Qualità 10+ turkey



**Turkey breast cuts**



	EAN Code	Approx. package kg	Pieces per package	Packages per carton	Approx. carton weight (kg)	Shelf life (days)
16500	2265750	0,5	1	8	4,0	9



**Chunks of turkey meat**



	EAN Code	Approx. package kg	Pieces per package	Packages per carton	Approx. carton weight (kg)	Shelf life (days)
16561	8006473904779	0,4	20	8	3,2	9

## Turkey 10+, vacuum pack



	Description	Approx. package kg	Pieces per package	Packages per carton	Approx. carton weight (kg)	Shelf life (days)
16187	Turkey breast 10+, female fr a, vac pack	2,1	1	4	8,4	20
16563	Boneless turkey breast cuts 10+, vac pack	2	2	2	4	20
16564	Sliced turkey breast 10+ fr a, vac pack	1	10	2	2	20

**NOVITÀ!**



**Tagliata di fesa di tacchino - La Suprema**



	Codice EAN	Peso conf. kg ca.	Pzi per conf.	Conf. per cassa	Peso cassa kg ca.	Shelf life (gg)
76365	00000000	00	00	00	00	00



Qualità 10+  
uncooked specialities

- R RETAIL
- F FAMILY
- M MAXI
- S SINGLE
- B BULK
- C CUTS
- VP VACUUM-PACKED



# QUALITÀ 10+

100% ITALIAN TURKEY

**RAISED WITHOUT  
ANTIBIOTICS**

Fed with a vegetal and  
NO OGM feed



Plant-based, GMO-free feed



**Turkey burgers**

	EAN Code	Approx. package kg	Pieces per package	Packages per carton	Approx. carton weight (kg)	Shelf life (days)
11852	8006473905103	0,204	2	6	1,224	9



**Ground turkey**

	EAN Code	Approx. package kg	Pieces per package	Packages per carton	Approx. carton weight (kg)	Shelf life (days)
11854	8006473905127	0,27	1	6	1,62	9



Qualità 10+  
breaded

- R RETAIL
- F FAMILY
- M MAXI
- S SINGLE
- B BULK
- C CUTS
- VP VACUUM-PACKED

# QUALITÀ 10+



100% ITALIAN CHICKEN

**RAISED WITHOUT  
ANTIBIOTICS**

Fed with a vegetal and  
**NO OGM** feed

● Plant-based, GMO-free feed

*with whole  
chicken fillets!*



**Chicken Nuggets**



UM	EAN Code	Approx. package kg	Pieces per package	Packages per carton	Approx. carton weight (kg)	Shelf life (days)
41349	nr 8006473902805	0,3	6	8	2,4	12



**Chicken fillet**



UM	EAN Code	Approx. package kg	Pieces per package	Packages per carton	Approx. carton weight (kg)	Shelf life (days)
40984	nr 8006473904786	0,25	3	8	2	12



**Chicken Nuggets**



UM	EAN Code	Approx. package kg	Pieces per package	Packages per carton	Approx. carton weight (kg)	Shelf life (days)
41396	nr -	1,0	20	4	4,00	12



**Chicken fillet**



UM	EAN Code	Approx. package kg	Pieces per package	Packages per carton	Approx. carton weight (kg)	Shelf life (days)
40985	nr -	0,99	9	4	3,96	12

# Amadori

## Tocco da Chef

For those who've dreamed of being a chef, it takes just a touch! With our Tocco da Chef line, gourmet dishes are a breeze to prepare. Each and every kit includes pre-cut Qualità 10+ chicken breast and all the ingredients you need in convenient packets, so you can make original, delicious dishes, which are both healthy and in tune with nature, in just 10 minutes.



# Tocco da Chef

- R RETAIL
- F FAMILY
- M MAXI
- S SINGLE
- B BULK
- C CUTS
- VP VACUUM-PACKED



100% ITALIAN CHICKEN

RAISED WITHOUT ANTIBIOTICS

Plant-based, GMO-free feed



**Tagliata di petto di pollo con sale rosso delle Hawaii**



	EAN Code	Approx. package kg	Pieces per package	Packages per carton	Approx. carton weight (kg)	Shelf life (days)
16277	8006473906346	0,35	16	6	2,1	11

**NEW!**



**Straccetti di petto di pollo con curcuma, pepe nero e semi di lino**



	EAN Code	Approx. package kg	Pieces per package	Packages per carton	Approx. carton weight (kg)	Shelf life (days)
16268	8006473906360	0,3	30	6	1,8	11

**NEW!**



**Straccetti di petto di pollo con rustica panatura di mais e paprika**



	EAN Code	Approx. package kg	Pieces per package	Packages per carton	Approx. carton weight (kg)	Shelf life (days)
16276	8006473906353	0,3	30	6	1,8	11

# Amadori

## Uncooked specialities

Cooking's a blast with Amadori! With our uncooked specialities, traditional Italian cuisine has been updated for today's modern lifestyle. Skewers, meatballs, traditional sausages and pops, ground meat and patties, rolls, and so much more goodness, all fast and easy to make, whether it's in a pan, on the grill, or in the oven. There are so many options for delicious dishes that are perfectly suited to today's fast-paced lifestyle and wide range of customs and habits.



*Cook and enjoy!*

Our Value Chain  
CONTROLLED FOOD PRODUCTION



# Uncooked specialities



**Royal skewers**



	UM	EAN Code	Approx. package kg	Pieces per package	Packages per carton	Approx. carton weight (kg)	Shelf life (days)
	10823	kg 2266460000000	0,664	4	8	5,312	10
	10863 SP	kg 2266460000000	0,664	4	6	3,984	10
	10821	kg 2522180000000	0,600	4	7	4,2	11



**Royal skewers**



	UM	EAN Code	Approx. package kg	Pieces per package	Packages per carton	Approx. carton weight (kg)	Shelf life (days)
	10853	kg 2522180000000	1,05	7	6	6,3	10



**Royal skewers**



	UM	EAN Code	Approx. package kg	Pieces per package	Packages per carton	Approx. carton weight (kg)	Shelf life (days)
	10824	kg -	1,350	9	4	5,400	11



**Chicken skewers with bay leaves**



	UM	EAN Code	Approx. package kg	Pieces per package	Packages per carton	Approx. carton weight (kg)	Shelf life (days)
	11901	kg 2368067000000	0,390	3	6	2,34	10

**Chicken skewers with bay leaves**



	UM	EAN Code	Approx. package kg	Pieces per package	Packages per carton	Approx. carton weight (kg)	Shelf life (days)
	10755	kg -	2,100	15	2	4,200	11

# Uncooked specialities



**Slim skewers**



UM	EAN Code	Approx. package kg	Pieces per package	Packages per carton	Approx. carton weight (kg)	Shelf life (days)
10989	nr 8006473904854	0,24	6	6	1,44	10



**Chicken skewers with peppers**



UM	EAN Code	Approx. package kg	Pieces per package	Packages per carton	Approx. carton weight (kg)	Shelf life (days)
10756	kg -	2,250	15	2	4,500	11



**Turkey skewers with peppers**



UM	EAN Code	Approx. package kg	Pieces per package	Packages per carton	Approx. carton weight (kg)	Shelf life (days)
11900	kg 2266000000000	0,465	3	6	2,79	10



**Turkey mini skewers**



UM	EAN Code	Approx. package kg	Pieces per package	Packages per carton	Approx. carton weight (kg)	Shelf life (days)
10744	kg 2315666000000	0,420	20	6	2,520	9



**Turkey mini skewers**



UM	EAN Code	Approx. package kg	Pieces per package	Packages per carton	Approx. carton weight (kg)	Shelf life (days)
10745	kg -	0,840	40	4	3,360	10

# Uncooked specialities

- R RETAIL
- F FAMILY
- M MAXI
- S SINGLE
- B BULK
- C CUTS
- VP VACUUM-PACKED



**Meatballs**



UM	EAN Code	Approx. package kg	Pieces per package	Packages per carton	Approx. carton weight (kg)	Shelf life (days)
10737	nr 8006473900634	0,240	12	8	1,920	9



**Speck and cheese meatballs**



UM	EAN Code	Approx. package kg	Pieces per package	Packages per carton	Approx. carton weight (kg)	Shelf life (days)
10950	nr 8006473901587	0,240	12	8	1,920	9



**Caserecce meatballs**



UM	EAN Code	Approx. package kg	Pieces per package	Packages per carton	Approx. carton weight (kg)	Shelf life (days)
10996	nr 8006473904984	0,27	6	8	2,16	9



**Truffle meatballs**



UM	EAN Code	Approx. package kg	Pieces per package	Packages per carton	Approx. carton weight (kg)	Shelf life (days)
10963	nr 8006473902409	0,24	12	8	1,92	9



**Tasty turkey, chicken and pork meatballs**



UM	EAN Code	Approx. package kg	Pieces per package	Packages per carton	Approx. carton weight (kg)	Shelf life (days)
10990	nr 8006473904830	0,24	12	8	1,92	9



# Uncooked specialities



**Chicken and turkey sausages**



UM	EAN Code	Approx. package kg	Pieces per package	Packages per carton	Approx. carton weight (kg)	Shelf life (days)
11005	nr 8006473905929	0,400	6	8	3,2	9
11006	nr 8006473905929	0,400	6	12	4,8	9



**Chicken and turkey sausages**



UM	EAN Code	Approx. package kg	Pieces per package	Packages per carton	Approx. carton weight (kg)	Shelf life (days)
10770	nr 8006473029014	0,650	9	6	3,900	9

**Chicken and turkey sausages**



UM	EAN Code	Approx. package kg	Pieces per package	Packages per carton	Approx. carton weight (kg)	Shelf life (days)
10839	kg -	2,4	34	2	4,8	10



**Chicken and turkey sausages (no pork)**



UM	EAN Code	Approx. package kg	Pieces per package	Packages per carton	Approx. carton weight (kg)	Shelf life (days)
11008	kg 8006473905943	0,400	6	6	2,4	9

**Chicken and turkey sausages (no pork)**



UM	EAN Code	Approx. package kg	Pieces per package	Packages per carton	Approx. carton weight (kg)	Shelf life (days)
11859	kg -	2,4	34	2	4,8	10



**Sausages -50% fat**



UM	EAN Code	Approx. package kg	Pieces per package	Packages per carton	Approx. carton weight (kg)	Shelf life (days)
11007	nr 8006473905936	0,400	10	6	2,4	9



**Sausages -50% fat 320g**



UM	EAN Code	Approx. package kg	Pieces per package	Packages per carton	Approx. carton weight (kg)	Shelf life (days)
10999	nr 8006473905004	0,320	8	6	1,92	9



**POPS Sausages**



UM	EAN Code	Approx. package kg	Pieces per package	Packages per carton	Approx. carton weight (kg)	Shelf life (days)
11009	nr 8006473905950	0,360	20	6	2,16	9



# Uncooked specialities

- R RETAIL
- F FAMILY
- M MAXI
- S SINGLE
- B BULK
- C CUTS
- VP VACUUM-PACKED



**Classic hamburger**



UM	EAN Code	Approx. package kg	Pieces per package	Packages per carton	Approx. carton weight (kg)	Shelf life (days)
10772	nr 8006473019107	0,204	2	14	2,856	9
10944	SP nr 8006473019107	0,204	2	8	1,632	9



**Classic hamburger**



UM	EAN Code	Approx. package kg	Pieces per package	Packages per carton	Approx. carton weight (kg)	Shelf life (days)
10753	nr 8006473029496	0,408	4	6	2,448	9

**Classic hamburger x12t**



UM	EAN Code	Approx. package kg	Pieces per package	Packages per carton	Approx. carton weight (kg)	Shelf life (days)
10859	kg -	1,250	12	5	6,250	9

**Classic hamburger x 6**



10948	nr 8006473901488	0,612	6	7	4,284	10
-------	------------------	-------	---	---	-------	----



**Herb hamburger**



UM	EAN Code	Approx. package kg	Pieces per package	Packages per carton	Approx. carton weight (kg)	Shelf life (days)
10945	PI nr 8006473029052	0,204	2	8	1,632	9

**Herb hamburger**



10754	nr 8006463029489	0,408	4	6	2,448	9
-------	------------------	-------	---	---	-------	---



**Delicate chicken burger**



UM	EAN Code	Approx. package kg	Pieces per package	Packages per carton	Approx. carton weight (kg)	Shelf life (days)
10786	nr 8006473901563	0,204	2	8	1,632	9

**Delicate chicken burger**



10953	nr 8006473901785	0,408	4	6	2,448	9
-------	------------------	-------	---	---	-------	---



**Chicken Hamburger**



UM	EAN Code	Approx. package kg	Pieces per package	Packages per carton	Approx. carton weight (kg)	Shelf life (days)
11877	nr 8006473906285	0,16	2	12	1,92	9



**Bacon Burger**



UM	EAN Code	Approx. package kg	Pieces per package	Packages per carton	Approx. carton weight (kg)	Shelf life (days)
11855	nr 8006473905646	0,204	2	8	1,632	9

**Bacon Burger**



11870	nr 8006473906087	0,408	4	6	2,448	9
-------	------------------	-------	---	---	-------	---

# Uncooked specialities

- R RETAIL
- F FAMILY
- M MAXI
- S SINGLE
- B BULK
- C CUTS
- VP VACUUM-PACKED



**Tasty turkey, chicken and bovine burger**



UM	EAN Code	Approx. package kg	Pieces per package	Packages per carton	Approx. carton weight (kg)	Shelf life (days)
10949	nr 8006473901570	0,204	2	8	1,632	9



**Turkey Hamburger**



UM	EAN Code	Approx. package kg	Pieces per package	Packages per carton	Approx. carton weight (kg)	Shelf life (days)
10925	nr 8006473904731	0,16	2	12	1,92	9



**Turkey Hamburger**



UM	EAN Code	Approx. package kg	Pieces per package	Packages per carton	Approx. carton weight (kg)	Shelf life (days)
11873	nr 8006473906216	0,32	4	6	1,92	9



**Gran Gourmet Hamburger**



UM	EAN Code	Approx. package kg	Pieces per package	Packages per carton	Approx. carton weight (kg)	Shelf life (days)
10976	nr 8006473902942	0,16	1	12	1,92	9



**Ground minced turkey meat**



UM	EAN Code	Approx. package kg	Pieces per package	Packages per carton	Approx. carton weight (kg)	Shelf life (days)
10926	kg 8006473903284	0,270	1	6	1,620	9

# Uncooked specialities



**Chicken Roll**



UM	EAN Code	Approx. package kg	Pieces per package	Packages per carton	Approx. carton weight (kg)	Shelf life (days)
76081 nr	8006473906513	0,6	1	4	2,4	8



**Chicken Roll**



UM	EAN Code	Approx. package kg	Pieces per package	Packages per carton	Approx. carton weight (kg)	Shelf life (days)
10836 kg	-	1,860	3	4	7,440	9



**Turkey Roll**



UM	EAN Code	Approx. package kg	Pieces per package	Packages per carton	Approx. carton weight (kg)	Shelf life (days)
10835 kg	-	1,860	3	4	7,440	10
10893 PRCD kg	2265190000000	1,860	3	4	7,440	10



**Double chicken / turkey roll**



UM	EAN Code	Approx. package kg	Pieces per package	Packages per carton	Approx. carton weight (kg)	Shelf life (days)
10805 kg	2265210000000	1,200	2	3	3,600	9

# Uncooked specialities

- R RETAIL
- F FAMILY
- M MAXI
- S SINGLE
- B BULK
- C CUTS
- VP VACUUM-PACKED



**Chicken bundles**



	UM	EAN Code	Approx. package kg	Pieces per package	Packages per carton	Approx. carton weight (kg)	Shelf life (days)		
	10897	PRCD	kg	2265250000000	1,170	9	4	4,680	10
	10833	kg	-	1,170	9	4	4,680	10	
	10780	kg	2522140000000	0,78	6	7	5,46	10	



**Chicken morcels with cheese**



	UM	EAN Code	Approx. package kg	Pieces per package	Packages per carton	Approx. carton weight (kg)	Shelf life (days)	
	10782	kg	-	1,950	15	2	3,900	8



**Gran Chef stuffed chicken**



	UM	EAN Code	Approx. package kg	Pieces per package	Packages per carton	Approx. carton weight (kg)	Shelf life (days)	
	10848	kg	2266010000000	1,050	1	4	4,200	9



**Grandi Classici Mix**



	UM	EAN Code	Approx. package kg	Pieces per package	Packages per carton	Approx. carton weight (kg)	Shelf life (days)	
	10965	kg	2264880000000	1,15	11	4	4,6	9



**Amadori**  
Carni e pollai  
RICETTA CLASSICA

**Amadori**  
Carni e pollai  
RICETTA CLASSICA

# Amadori

## Uncooked pork

*Cook and enjoy!*

Our selection of Amadori ready-to-cook pork products is a great choice for all who love the traditional flavours of grilled meat or who like to enhance pasta and sides with a delicious sauce or other special ingredients.

Our Value Chain  
CONTROLLED FOOD PRODUCTION



# Uncooked pork

- R RETAIL
- F FAMILY
- M MAXI
- S SINGLE
- B BULK
- C CUTS
- VP VACUUM-PACKED



**Pork skewers**



	UM	EAN Code	Approx. package kg	Pieces per package	Packages per carton	Approx. carton weight (kg)	Shelf life (days)
<b>10936</b>	kg	-	1,494	9	4	5,976	10



**Classic pork sausages**



	UM	EAN Code	Approx. package kg	Pieces per package	Packages per carton	Approx. carton weight (kg)	Shelf life (days)
<b>10932</b>	kg	-	2,3	40	2	4,6	10



**Link sausages**



	UM	EAN Code	Approx. package kg	Pieces per package	Packages per carton	Approx. carton weight (kg)	Shelf life (days)
<b>10919</b>	kg	-	1,62	18	2	3,24	10

**Link sausages**



	UM	EAN Code	Approx. package kg	Pieces per package	Packages per carton	Approx. carton weight (kg)	Shelf life (days)
<b>10920</b>	kg	-	5,5	55	1	5,5	10



**Link classic sausages**



	UM	EAN Code	Approx. package kg	Pieces per package	Packages per carton	Approx. carton weight (kg)	Shelf life (days)
<b>10934</b>	kg	-	2,88	36	2	5,76	10



**Large sausage**



	UM	EAN Code	Approx. package kg	Pieces per package	Packages per carton	Approx. carton weight (kg)	Shelf life (days)
<b>10943</b>	kg	-	1,0	-	9	9	10

**Whole sausage**



	UM	EAN Code	Approx. package kg	Pieces per package	Packages per carton	Approx. carton weight (kg)	Shelf life (days)
<b>10918</b>	kg	-	2,8	1	2	5,6	10

# Amadori

## *Buona Domenica*

Yet another Amadori delicacy, our Buona Domenica line of meatloaf rolls is perfect for topping off your day with a special meal without having to sweat and toil in the kitchen. Choose from a variety of options, such as our classic recipe, ricotta and spinach, or veggies and cheese for those who enjoy more delicate flavours. Or try a more rustic recipe with speck and cheese or scamorza and porcini mushrooms, or something a bit more sophisticated with truffles, with PDO pecorino romano and artichoke, or with PDO Grana Padano and radicchio. Every Buona Domenica product is ready to pop in the oven or cook up in a pan. A meatloaf feast has never been easier!



Our Value Chain  
CONTROLLED  
FOOD PRODUCTION





# Buona Domenica

- R RETAIL
- F FAMILY
- M MAXI
- S SINGLE
- B BULK
- C CUTS
- VP VACUUM-PACKED

*Tender, delicious  
meatloaf rolls!*



**Classic Buona Domenica meatloaf roll**

UM	EAN Code	Approx. package kg	Pieces per package	Packages per carton	Approx. carton weight (kg)	Shelf life (days)
11819 nr	8006473010609	0,5	1	4	2	10
11851 nr	8006473010609	0,5	1	7	3,5	10



**Classic Buona Domenica meatloaf roll**

UM	EAN Code	Approx. package kg	Pieces per package	Packages per carton	Approx. carton weight (kg)	Shelf life (days)
11833 SP nr	8006473900139	0,700	1	4	2,800	9



**Buona Domenica speck & cheese**

UM	EAN Code	Approx. package kg	Pieces per package	Packages per carton	Approx. carton weight (kg)	Shelf life (days)
11831 SP nr	8006473029533	0,700	1	4	2,800	9

# Buona Domenica



**Buona Domenica scamorza cheese & porcini mushrooms**



UM	EAN Code	Approx. package kg	Pieces per package	Packages per carton	Approx. carton weight (kg)	Shelf life (days)
11842	nr 8006473900924	0,700	1	4	2,800	9



**Buona Domenica ricotta & spinach**



UM	EAN Code	Approx. package kg	Pieces per package	Packages per carton	Approx. carton weight (kg)	Shelf life (days)
11832	nr 8006473029540	0,700	1	4	2,800	9



**Buona Domenica vegetables & cheese**



UM	EAN Code	Approx. package kg	Pieces per package	Packages per carton	Approx. carton weight (kg)	Shelf life (days)
11838	nr 8006473900887	0,700	1	4	2,800	9



**Buona Domenica with truffle**



UM	EAN Code	Approx. package kg	Pieces per package	Packages per carton	Approx. carton weight (kg)	Shelf life (days)
11845	nr 8006473901877	0,700	1	4	2,800	9

# Buona Domenica

- R RETAIL
- F FAMILY
- M MAXI
- S SINGLE
- B BULK
- C CUTS
- VP VACUUM-PACKED



**Buona Domenica Pecorino Romano DOP cheese & Artichokes**



UM	EAN Code	Approx. package kg	Pieces per package	Packages per carton	Approx. carton weight (kg)	Shelf life (days)
11858	nr 8006473905691	0,700	1	4	2,800	9



**Buona Domenica Grana Padano DOP cheese & red Italian chicory**



UM	EAN Code	Approx. package kg	Pieces per package	Packages per carton	Approx. carton weight (kg)	Shelf life (days)
11869	nr 8006473906193	0,700	1	4	2,800	9



# Amadori

## Breaded

Delicious and ready to eat in just a few minutes in a pan or in the oven or air fryer, Amadori breaded products bring a bit of joy and flavour to any moment of the day. Whether it's a breaded cutlet, an escalope, cordon bleu, Gran Burger, or some fun Birbe snacks, there's an almost endless number of ways to bring some happiness to your table. You can even choose your favourite type of breading, from the most traditional to rice, corn, or even cornflakes, so everyone in the family is sure to find something they love.

*It's crunchy goodness!*



Our Value Chain  
CONTROLLED  
FOOD PRODUCTION



# Breaded

- R RETAIL
- F FAMILY
- M MAXI
- S SINGLE
- B BULK
- C CUTS
- VP VACUUM-PACKED



**Thin-cut cutlet std**

R

UM	EAN Code	Approx. package kg	Pieces per package	Packages per carton	Approx. carton weight (kg)	Shelf life (days)
40994	nr 8006473903567	0,30	2	8	2,4	12



**Thin-cut cutlet 600g fam std**

F

UM	EAN Code	Approx. package kg	Pieces per package	Packages per carton	Approx. carton weight (kg)	Shelf life (days)
40701	nr 8006473905851	0,600	4	4	2,4	12



**Crunchy cutlet**

R

UM	EAN Code	Approx. package kg	Pieces per package	Packages per carton	Approx. carton weight (kg)	Shelf life (days)
41374	nr 8006473901891	0,22	2	8	1,76	12



**GranBurger**

R

UM	EAN Code	Approx. package kg	Pieces per package	Packages per carton	Approx. carton weight (kg)	Shelf life (days)
41420	nr 8006473903437	0,28	2	8	2,24	12

# Breaded



**Classic chicken cutlet**



UM	EAN Code	Approx. package kg	Pieces per package	Packages per carton	Approx. carton weight (kg)	Shelf life (days)
41007 SP nr	8006473018803	0,22	2	6	1,32	12



**Classic chicken cutlet x3 std**



UM	EAN Code	Approx. package kg	Pieces per package	Packages per carton	Approx. carton weight (kg)	Shelf life (days)
40702 nr	8006473905868	0,330	3	6	1,98	12



**Classic chicken cutlet**



UM	EAN Code	Approx. package kg	Pieces per package	Packages per carton	Approx. carton weight (kg)	Shelf life (days)
41189 nr	8006473022503	0,55	5	7	3,85	12



**Classic chicken cutlet**



UM	EAN Code	Approx. package kg	Pieces per package	Packages per carton	Approx. carton weight (kg)	Shelf life (days)
41171 PRCD kg	2264890000000	1,10	10	4	4,4	12
41111 kg	-	1,10	10	4	4,4	12

# Breaded



**Escalope with spinach**



	UM	EAN Code	Approx. package kg	Pieces per package	Packages per carton	Approx. carton weight (kg)	Shelf life (days)
	nr	8006473016304	0,22	2	10	2,2	12
	nr	8006473016304	0,22	2	6	1,32	12



**Escalope with spinach x3 std**



	UM	EAN Code	Approx. package kg	Pieces per package	Packages per carton	Approx. carton weight (kg)	Shelf life (days)
	nr	8006473905875	0,330	3	6	1,98	12



**Escalope with spinach**



	UM	EAN Code	Approx. package kg	Pieces per package	Packages per carton	Approx. carton weight (kg)	Shelf life (days)
	nr	8006473022602	0,55	5	7	3,85	12



**Escalope with spinach**



	UM	EAN Code	Approx. package kg	Pieces per package	Packages per carton	Approx. carton weight (kg)	Shelf life (days)
	kg	2604930000000	1,1	10	4	4,4	12
	kg	-	1,1	10	4	4,4	12

SP: SMALL package - PRCD: priced



# Breaded

- R RETAIL
- F FAMILY
- M MAXI
- S SINGLE
- B BULK
- C CUTS
- VP VACUUM-PACKED



**Chicken nuggets**



UM	EAN Code	Approx. package kg	Pieces per package	Packages per carton	Approx. carton weight (kg)	Shelf life (days)
41173 nr	8006473018704	0,3	16	10	3	12
41092 SP	nr 8006473018704	0,3	16	6	1,8	12



**Chicken nuggets**



UM	EAN Code	Approx. package kg	Pieces per package	Packages per carton	Approx. carton weight (kg)	Shelf life (days)
41191 nr	8006473022701	0,5	27	7	3,5	12



**Chicken nuggets**



UM	EAN Code	Approx. package kg	Pieces per package	Packages per carton	Approx. carton weight (kg)	Shelf life (days)
41116 kg	-	1,04	54	4	4,16	12
41172 PRCD	kg 2657800000000	1	52	4	4	12



**Chicken nuggets with spinach**



UM	EAN Code	Approx. package kg	Pieces per package	Packages per carton	Approx. carton weight (kg)	Shelf life (days)
41048 nr	8006473901648	0,3	16	6	1,8	12



**Chicken nuggets with Speck and Emmenthal**



UM	EAN Code	Approx. package kg	Pieces per package	Packages per carton	Approx. carton weight (kg)	Shelf life (days)
41049 nr	8006473901662	0,3	16	6	1,8	12



# Breaded

- R RETAIL
- F FAMILY
- M MAXI
- S SINGLE
- B BULK
- C CUTS
- VP VACUUM-PACKED



**Le Birbe Pops**



UM	EAN Code	Approx. package kg	Pieces per package	Packages per carton	Approx. carton weight (kg)	Shelf life (days)	
40964	nr	8006473905592	0,27	36	6	1,62	12



**Le Birbe Pops**



UM	EAN Code	Approx. package kg	Pieces per package	Packages per carton	Approx. carton weight (kg)	Shelf life (days)	
40966	nr	8006473906070	0,5	66	7	3,5	12



**Le Birbe Pops**



UM	EAN Code	Approx. package kg	Pieces per package	Packages per carton	Approx. carton weight (kg)	Shelf life (days)	
40965	kg	2758697000000	1	133	4	4	12



**Le Birbe Rings retail**



UM	EAN Code	Approx. package kg	Pieces per package	Packages per carton	Approx. carton weight (kg)	Shelf life (days)	
40871	nr	8006473906377	0,27	14	6	1,62	12

**NEW!**

**EXTRA CRUNCHY**



# Breaded

- R RETAIL
- F FAMILY
- M MAXI
- S SINGLE
- B BULK
- C CUTS
- VP VACUUM-PACKED



**Cheese and ham cordon**



UM	EAN Code	Approx. package kg	Pieces per package	Packages per carton	Approx. carton weight (kg)	Shelf life (days)
41170	nr 8006473016403	0,25	2	10	2,5	12
41006 SP	nr 8006473016403	0,25	2	6	1,5	12



**Cheese and ham cordon**



UM	EAN Code	Approx. package kg	Pieces per package	Packages per carton	Approx. carton weight (kg)	Shelf life (days)
41192	nr 8006473022800	0,5	4	7	3,5	12



**Cheese and ham cordon**



UM	EAN Code	Approx. package kg	Pieces per package	Packages per carton	Approx. carton weight (kg)	Shelf life (days)
41335 PRCD	kg 2604790000000	1	8	4	4	12
41114	kg -	1	8	4	4	12



**Prague ham and mozzarella cheese cordon**



UM	EAN Code	Approx. package kg	Pieces per package	Packages per carton	Approx. carton weight (kg)	Shelf life (days)
41422	nr 8006473903550	0,25	2	6	1,5	12



**Jambleu**



UM	EAN Code	Approx. package kg	Pieces per package	Packages per carton	Approx. carton weight (kg)	Shelf life (days)
41014	nr 8006473901556	0,26	4	6	1,56	12



**Chickito mexican chicken td**



UM	EAN Code	Approx. package kg	Pieces per package	Packages per carton	Approx. carton weight (kg)	Shelf life (days)
41398	nr -	1	50	4	4	12



**BIRBE** *Classiche*  
SFIZIOSI  
BOCCACCINI  
Cottura facile  
al forno o in padella  
5 pezzi  
Amadori

La Nuova Filatura  
di pasta di semola di grano duro  
100% ITALIANO

Two large, golden-brown breaded fish fillets are served on a light-colored oval plate. They are accompanied by a fresh salad consisting of green and red leafy vegetables, cherry tomatoes, and sliced mushrooms.

Three small white ceramic bowls containing a creamy dipping sauce, garnished with finely chopped green herbs.

# Amadori

## Ready to-heat

Fast, practical and versatile, Amadori pre-cooked specialities are ready to heat up with your favourite ingredients for delicious dishes in just a few minutes. From tender strips of chicken breast and spicy chicken kebab to delicious chicken wings, it couldn't be easier to serve up a healthy salad or other creative dishes after a long day at work.

*Fast and  
flavourful!*



Our Value Chain  
CONTROLLED  
FOOD PRODUCTION



# Ready to-heat

- R RETAIL
- F FAMILY
- M MAXI
- S SINGLE
- B BULK
- C CUTS
- VP VACUUM-PACKED



**Sliced chicken breast**



UM	EAN Code	Approx. package kg	Pieces per package	Packages per carton	Approx. carton weight (kg)	Shelf life (days)
41473	nr 8006473901761	0,280	25	8	2,24	12

**Sliced chicken breast**



UM	EAN Code	Approx. package kg	Pieces per package	Packages per carton	Approx. carton weight (kg)	Shelf life (days)
41476	kg -	0,750	50	6	4,5	12



**Chicken Kebab**



UM	EAN Code	Approx. package kg	Pieces per package	Packages per carton	Approx. carton weight (kg)	Shelf life (days)
41489	nr 8006473903048	0,280	25	8	2,24	12



**Turkey Kebab**



UM	EAN Code	Approx. package kg	Pieces per package	Packages per carton	Approx. carton weight (kg)	Shelf life (days)
41472	nr 8006473901754	0,280	25	8	2,24	12

**Turkey Kebab**



UM	EAN Code	Approx. package kg	Pieces per package	Packages per carton	Approx. carton weight (kg)	Shelf life (days)
41475	kg -	0,750	50	6	4,5	12



**Spicy chicken wings**



UM	EAN Code	Approx. package kg	Pieces per package	Packages per carton	Approx. carton weight (kg)	Shelf life (days)
41252	nr 8006473901341	0,5	15	6	3	12

**Spicy chicken wings**



UM	EAN Code	Approx. package kg	Pieces per package	Packages per carton	Approx. carton weight (kg)	Shelf life (days)
41258	kg -	1	27	4	4	11



**Smoked paprika chicken wings**



UM	EAN Code	Approx. package kg	Pieces per package	Packages per carton	Approx. carton weight (kg)	Shelf life (days)
41307	nr 8006473904199	0,5	13	6	3	12

**Smoked paprika chicken wings**



UM	EAN Code	Approx. package kg	Pieces per package	Packages per carton	Approx. carton weight (kg)	Shelf life (days)
41308	nr -	1	25	4	4	15

*Pronto da gustare!*

**NOVITÀ!**



**Polpettone Cotto**



UM	Codice EAN	Peso conf. kg ca.	Pzi per conf.	Conf. per cassa	Peso cassa kg ca.	Shelf life (gg)
00000	nr 0000000	00	00	00	00	00

# Amadori

## Vegetable specialities

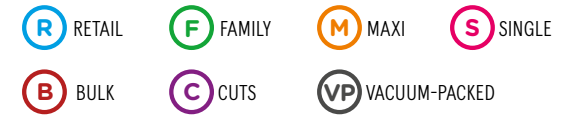


Ready in just minutes, these specialities seamlessly combine the nutritional properties of poultry meat and vegetables and are designed for anyone looking for quality products that are a source of protein and fibre for a healthy, balanced diet.

Our Value Chain  
CONTROLLED  
FOOD PRODUCTION



# Vegetable specialities



**Hamburger with vegetables,  
quinoa and chicken**



UM	EAN Code	Approx. package kg	Pieces per package	Packages per carton	Approx. carton weight (kg)	Shelf life (days)
40301 nr	8006473903543	0,190	2	6	1,14	12

*100% italian  
chicken!*

# Amadori VEGGY

CON LEGUMI 100% ITALIANI

LA LINEA DAL GUSTO  
SORPRENDENTE!  
BUONA, INNOVATIVA  
E CON IL CUORE VEGETALE!



You'll be surprised how delicious they are. With our Ama Vivi e Gusta line of plant-based products, Amadori brings you a selection of wholesome, flavourful proteins that are perfect for varied and balanced diet. Choose from our Le Birbe Veggy snack bites, a juicy Veggy Burger, a plant-based breaded cutlet, or our irresistible Polpettine Veggy meatballs. **Tutte le ricette sono senza soia aggiunta, con legumi da filiera 100% italiana e disponibili sia fresche che surgelate.**

For the pleasure of eating well, eating right, and having fun.



# Veggy

- R RETAIL
- F FAMILY
- M MAXI
- S SINGLE
- B BULK
- C CUTS
- VP VACUUM-PACKED

NO ADDED SOYA!\*



**Le Birbe Veggy FR**



	EAN Code	Approx. package kg	Pieces per package	Packages per carton	Approx. carton weight (kg)	Shelf life (days)
<b>76237</b>	8006473905998	0,2	12	4	0,8	27



**Veggy Cutlets 200g**



	EAN Code	Approx. package kg	Pieces per package	Packages per carton	Approx. carton weight (kg)	Shelf life (days)
<b>40456</b>	8006473906001	0,200	2	4	0,800	27



**Veggy Burger FR**



	EAN Code	Approx. package kg	Pieces per package	Packages per carton	Approx. carton weight (kg)	Shelf life (days)
<b>40457</b>	8006473906018	0,200	2	4	0,800	27



**Veggy Meatballs 200g**



	EAN Code	Approx. package kg	Pieces per package	Packages per carton	Approx. carton weight (kg)	Shelf life (days)
<b>40465</b>	8006473906384	0,2	12	4	0,8	27

testo mancante



\*La ricetta non contiene soia come ingrediente. Può però essere presente in tracce negli altri ingredienti utilizzati.

# Veggy

- R RETAIL
- F FAMILY
- M MAXI
- S SINGLE
- B BULK
- C CUTS
- VP VACUUM-PACKED



**Le Birbe Veggy ast sur 220g** R

	EAN Code	Approx. package kg	Pieces per package	Packages per carton	Approx. carton weight (kg)	Shelf life (days)
<b>30057</b>	8006473906094	0,220	12	9	1,98	540



**Veggy Cutlet ast sur 200g** R

	EAN Code	Approx. package kg	Pieces per package	Packages per carton	Approx. carton weight (kg)	Shelf life (days)
<b>30058</b>	8006473906100	0,200	2	9	1,8	540

# Veggy

- R RETAIL
- F FAMILY
- M MAXI
- S SINGLE
- B BULK
- C CUTS
- VP VACUUM-PACKED

TONS OF PROTEIN!



**Le Birbe Veggy SR FS 3kg ITA** M

	EAN Code	Approx. package kg	Pieces per package	Packages per carton	Approx. carton weight (kg)	Shelf life (days)
<b>30054</b>	8006473906162	1,0	52	3	3	450



**Veggy Cutlet SR FS 3kg ITA** M

	EAN Code	Approx. package kg	Pieces per package	Packages per carton	Approx. carton weight (kg)	Shelf life (days)
<b>30055</b>	8006473906179	1,0	10	3	3	450



**Veggy Burger SR FS 3kg ITA** M

	EAN Code	Approx. package kg	Pieces per package	Packages per carton	Approx. carton weight (kg)	Shelf life (days)
<b>30056</b>	8006473906186	1,0	10	3	3	450



**Meatballs Sur 3Kg** M

	EAN Code	Approx. package kg	Pieces per package	Packages per carton	Approx. carton weight (kg)	Shelf life (days)
<b>76065</b>	8006473906421	1	59	3	3	365

# Amadori

## *Roasted meats*

For those who want a healthy diet without sacrificing flavour, quality and convenience, our range of Amadori roasted meats is just for you! Sliced or whole, breast or leg, Amadori roasted chicken and turkey meats are an excellent choice for sandwiches, snacks, or other dishes that are as fast to make as they are delicious. All our roasted meats are made with 100% Italian poultry with no added polyphosphates, as well as with our Qualità 10+ chicken or turkey raised without antibiotics.



# Roasted meats

- R RETAIL
- F FAMILY
- M MAXI
- S SINGLE
- B BULK
- C CUTS
- VP VACUUM-PACKED



**Roast turkey thigh**



UM	EAN Code	Approx. package kg	Pieces per package	Packages per carton	Approx. carton weight (kg)	Shelf life (days)
41239 nr	8006473029212	0,300	1	10	3	90



**Roast turkey breast**



UM	EAN Code	Approx. package kg	Pieces per package	Packages per carton	Approx. carton weight (kg)	Shelf life (days)
41241 nr	8006473029236	0,300	1	10	3	90

# Roasted meats

- R RETAIL
- F FAMILY
- M MAXI
- S SINGLE
- B BULK
- C CUTS
- VP VACUUM-PACKED

QUALITÀ  
**10+**

100% ITALIAN TURKEY

GLUTEN-FREE



Sliced roast turkey breast

R

UM	EAN Code	Approx. package kg	Pieces per package	Packages per carton	Approx. carton weight (kg)	Shelf life (days)
76233 nr	8006473906698	0,1	5	12	1,2	36

GLUTEN-FREE



Roast turkey breast

C

UM	EAN Code	Approx. package kg	Pieces per package	Packages per carton	Approx. carton weight (kg)	Shelf life (days)
41704 nr	-	3,000	1	2	6	90

QUALITÀ  
**10+**

100% ITALIAN CHICKEN

GLUTEN-FREE



Sliced roast chicken breast

R

UM	EAN Code	Approx. package kg	Pieces per package	Packages per carton	Approx. carton weight (kg)	Shelf life (days)
76234 nr	8006473906704	0,1	5	12	1,2	36

GLUTEN-FREE



Roast chicken breast

C

UM	EAN Code	Approx. package kg	Pieces per package	Packages per carton	Approx. carton weight (kg)	Shelf life (days)
41447 kg	-	3,000	1	2	6	90

# Roasted meats

- R RETAIL
- F FAMILY
- M MAXI
- S SINGLE
- B BULK
- C CUTS
- VP VACUUM-PACKED



**Pagnottella fesa intera di tacchino arrosto** T

UM	Codice EAN	Peso conf. kg ca.	P.zi per conf.	Conf. per cassa	Peso cassa kg ca.	Shelf life (gg)	
41223	kg	-	3,550	1	2	7,1	90

**GLUTEN-FREE**



**GranRosty turkey breast** C

UM	EAN Code	Approx. package kg	Pieces per package	Packages per carton	Approx. carton weight (kg)	Shelf life (days)	
41265	kg	-	3,000	1	2	6	90

**GLUTEN-FREE**



**GranRosty chicken breast** C

UM	EAN Code	Approx. package kg	Pieces per package	Packages per carton	Approx. carton weight (kg)	Shelf life (days)	
41270	kg	-	3,000	1	2	6	90

**GLUTEN-FREE**



**Roast chicken with herbs** C

UM	EAN Code	Approx. package kg	Pieces per package	Packages per carton	Approx. carton weight (kg)	Shelf life (days)	
41455	kg	-	3,000	1	2	6	90

# Amadori

## Frankfurters



Excellent on the grill, in the pad, or even boiled, served on their own, in a hot dog bun with all the toppings, or chopped up into other delicious dishes, Amadori frankfurters are all gluten-free and contain no added polyphosphates.

We have two distinct lines: our 100% frankfurters without mechanically separated meat, with either Qualità 10+ chicken and turkey or pork; and our Evviva! frankfurters, which come in chicken and turkey, chicken and turkey with cheese, and pork and turkey versions. There's something for everyone!

Our Value Chain  
CONTROLLED  
FOOD PRODUCTION

OUR CONTROLLED  
AGRI-FOOD

Supply Chain

Chicken, Turkey and Pork  
100% ITALIAN



# Frankfurters 100%

## Qualità 10+

- R RETAIL
- F FAMILY
- M MAXI
- S SINGLE
- B BULK
- C CUTS
- VP VACUUM-PACKED

# QUALITÀ 10+

**CHICKEN AND TURKEY  
100% ITALIAN**

**RAISED WITHOUT  
ANTIBIOTICS**

Fed with a vegetal and  
**NO OGM feed**

*Source of iodine  
Lactose free*



**100% chicken/turkey frankfurter**

UM	EAN Code	Approx. package kg	Pieces per package	Packages per carton	Approx. carton weight (kg)	Shelf life (days)
42075	nr 8006473903079	0,1	4	25	2,5	120



**100% chicken/turkey frankfurter multipack**

UM	EAN Code	Approx. package kg	Pieces per package	Packages per carton	Approx. carton weight (kg)	Shelf life (days)
42077	nr 8006473903239	0,5	20	5	2,5	120



**100% chicken/turkey frankfurter**

UM	EAN Code	Approx. package kg	Pieces per package	Packages per carton	Approx. carton weight (kg)	Shelf life (days)
42079	nr 8006473903093	0,25	3	12	3	120



**100% chicken/turkey frankfurter 250g x3**

UM	EAN Code	Approx. package kg	Pieces per package	Packages per carton	Approx. carton weight (kg)	Shelf life (days)
42082	nr 8006473903253	0,75	9	4	3	120

# Frankfurters 100% pork

- R RETAIL
- F FAMILY
- M MAXI
- S SINGLE
- B BULK
- C CUTS
- VP VACUUM-PACKED

LACTOSE FREE



100% pork frankfurter <span style="float: right;"><span style="border: 1px solid red; border-radius: 50%; padding: 2px;">X</span> <span style="border: 1px solid red; border-radius: 50%; padding: 2px;">S</span></span>							
UM	EAN Code	Approx. package kg	Pieces per package	Packages per carton	Approx. carton weight (kg)	Shelf life (days)	
42096	nr 8006473903185	0,1	4	25	2,5	120	

LACTOSE FREE



100% pork frankfurter <span style="float: right;"><span style="border: 1px solid red; border-radius: 50%; padding: 2px;">X</span> <span style="border: 1px solid blue; border-radius: 50%; padding: 2px;">R</span></span>							
UM	EAN Code	Approx. package kg	Pieces per package	Packages per carton	Approx. carton weight (kg)	Shelf life (days)	
42097	nr 8006473903192	0,25	3	12	3	120	

*No monosodium  
glutamate  
added*



# EVVIVA! Frankfurters chicken & turkey

- R RETAIL
- F FAMILY
- M MAXI
- S SINGLE
- B BULK
- C CUTS
- VP VACUUM-PACKED

# EVVIVA!

Tutta la bontà del wurstel italiano

LACTOSE FREE



**Evviva chicken/turkey frankfurter**



UM	EAN Code	Approx. package kg	Pieces per package	Packages per carton	Approx. carton weight (kg)	Shelf life (days)
42244	nr 8006473000501	0,1	4	40	4,0	120
42103	nr 8006473000501	0,1	4	25	2,5	120

LACTOSE FREE



x5

**Evviva chicken/turkey frankfurter multipack**



UM	EAN Code	Approx. package kg	Pieces per package	Packages per carton	Approx. carton weight (kg)	Shelf life (days)
42240	nr -	0,5	20	5	2,5	120



**Evviva chicken/turkey frankfurter with cheese**



UM	EAN Code	Approx. package kg	Pieces per package	Packages per carton	Approx. carton weight (kg)	Shelf life (days)
42254	nr 8006473009603	0,15	3	16	2,4	120

*No added polyphosphates*

# EVVIVA! Frankfurters chicken & turkey

- R RETAIL
- F FAMILY
- M MAXI
- S SINGLE
- B BULK
- C CUTS
- VP VACUUM-PACKED

LACTOSE FREE



**Evviva chicken/turkey frankfurter**

	UM	EAN Code	Approx. package kg	Pieces per package	Packages per carton	Approx. carton weight (kg)	Shelf life (days)
	nr	8006473000600	0,25	3	16	4,0	120
	nr	8006473000600	0,25	3	12	3,0	120

LACTOSE FREE



**Evviva chicken/turkey frankfurter**

	UM	EAN Code	Approx. package kg	Pieces per package	Packages per carton	Approx. carton weight (kg)	Shelf life (days)
	nr	8006473008705	0,75	9	4	3	120

LACTOSE FREE



**Evviva chicken/turkey frankfurter**

	UM	EAN Code	Approx. package kg	Pieces per package	Packages per carton	Approx. carton weight (kg)	Shelf life (days)
	nr	8006473005407	0,5	6	6	3	120

LACTOSE FREE



**Evviva chicken/turkey frankfurter**

	UM	EAN Code	Approx. package kg	Pieces per package	Packages per carton	Approx. carton weight (kg)	Shelf life (days)
	nr	8006473901471	0,80	12	6	4,8	120
	nr	8006473010203	0,85	12	4	3,4	120

LACTOSE FREE



**Evviva chicken/turkey frankfurter**

	UM	EAN Code	Approx. package kg	Pieces per package	Packages per carton	Approx. carton weight (kg)	Shelf life (days)
	nr	8006473901037	1	12	4	4	120

# EVVIVA! Frankfurters pork & turkey

- R RETAIL
- F FAMILY
- M MAXI
- S SINGLE
- B BULK
- C CUTS
- VP VACUUM-PACKED

LACTOSE FREE



**Evviva pork/turkey frankfurter**

UM	EAN Code	Approx. package kg	Pieces per package	Packages per carton	Approx. carton weight (kg)	Shelf life (days)
42245	nr 8006473006404	0,1	4	40	4,0	120

LACTOSE FREE



**Evviva pork/turkey frankfurter**

UM	EAN Code	Approx. package kg	Pieces per package	Packages per carton	Approx. carton weight (kg)	Shelf life (days)
42238	nr 8006473006503	0,25	3	16	4,0	120

LACTOSE FREE



**Evviva pork/turkey frankfurter**

UM	EAN Code	Approx. package kg	Pieces per package	Packages per carton	Approx. carton weight (kg)	Shelf life (days)
42243	nr 8006473008903	0,75	9	4	3	120

x3

LACTOSE FREE



**Evviva pork/turkey frankfurter**

UM	EAN Code	Approx. package kg	Pieces per package	Packages per carton	Approx. carton weight (kg)	Shelf life (days)
42224	nr 8006473006602	0,5	6	6	3	120

LACTOSE FREE



**Evviva pork/turkey frankfurter**

UM	EAN Code	Approx. package kg	Pieces per package	Packages per carton	Approx. carton weight (kg)	Shelf life (days)
42107	nr 8006473901044	1	12	4	4	120

# Amadori

## Traditional



Versatile, never heavy, and rich in noble proteins, chicken and turkey are an important part of a varied diet and lend themselves to boundless creativity in the kitchen. With our vast selection of traditional cuts of meat, Amadori gives you a great many options for an endless array of delicious dishes, from the timeless classics for any occasion, such as whole roast chicken or stuffed hen turkey, to other delicious cuts for every day, such as tender turkey thighs or the ever-popular chicken wings.

Our Value Chain  
CONTROLLED FOOD PRODUCTION



# Traditional



## Whole chicken



	Description	Approx. package kg	Packages per carton	Approx. carton weight (kg)	Shelf life (days)
10117	Whole chicken x4 with head and legs, giblets removed, fr a	10	1	10	12
10154	Whole, corn-fed chicken x4 with head and legs, giblets removed, fr a	10	1	10	12



## Whole chicken to dissect



	Description	Approx. package kg	Packages per carton	Approx. carton weight (kg)	Shelf life (days)
10245	Whole untucked chicken to dissect x6, fr a	12,6	1	12,6	12
10249	Whole untucked chicken to dissect, fr a	12	1	12	12
10006	Whole untucked, corn-fed chicken to dissect x6, fr a	12,6	1	12,6	12
10208	Whole untucked chicken to dissect x7, fr a	11,9	1	11,9	12
10230	Whole untucked chicken, to dissect x8, fr a	12	1	12	12
10266	Whole untucked, corn-fed chicken to dissect, fr a	12	1	12	12
10265	Whole untucked, corn-fed chicken to dissect x6, fr a	12,6	1	12,6	12
10279	Whole untucked chicken to dissect x6, COP fr a	12,6	1	12,6	12
10280	Whole untucked chicken to dissect, COP fr a	12	1	12	12
10282	Whole untucked chicken to dissect x4, fr a	3	4	12	12
10287	Whole untucked chicken to dissect x4, fr a	12,5	1	12,5	12



## Whole chicken



	Description	Approx. package kg	Packages per carton	Approx. carton weight (kg)	Shelf life (days)
10203	Whole chicken 800 fr a	9,78	1	9,78	12
10253	Whole chicken 850 fr a	0,845	12	10,14	12
10220	Whole chicken 900 fr a	10,86	1	10,86	12
10270	Whole chicken 970 fr a	0,95	10	9,5	12
10201	Whole chicken 1000 fr a	10	1	10	12
10251	Whole chicken 1000 fr a	1,03	10	10,3	12
10223	Whole chicken 1100 fr a	1,11	10	11,1	12
10273	Whole chicken 1100 fr a	1,14	10	11,45	12
10212	Whole chicken 1200 fr a	12,1	1	12,1	12
10262	Whole chicken 1200 fr a	1,23	10	12,3	12
10204	Whole chicken fr a	0,63	16	10,08	12
10254	Whole chicken fr a	10,08	1	10,08	12
10213	Whole chicken 1300 fr a	1,33	8	10,64	12
10227	Whole chicken 1300 sc fr a	1,33	9	11,97	12
10263	Whole chicken 1300 fr a	1,34	8	10,72	12
10232	Whole chicken rost 1000 seasoned fr a	1	10	10	12
10234	Whole chicken rost 1100 seasoned fr a	1,11	10	11,1	11
10235	Whole chicken rost 1200 seasoned fr a	1,21	10	12,1	11
10231	Whole chicken rost 1100num seasoned fr a	1,11	10	11	11
10283	Whole chicken num seasoned fr a	1	10	10	11
10278	Whole untucked chicken to dissect x4, fr a	1	10	10	14
10253	Whole chicken g 850 fr a	0,84	12	10,08	12
10214	Whole chicken medium-size fr b	0,965	10	9,65	12
10219	Whole chicken medium-size b	1,16	10	11,6	12
10224	Whole chicken small-size fr b	0,715	12	8,58	12
10264	Whole chicken g medium-size fr b	9,65	1	9,65	12
10269	Whole chicken g medium-size b	1,16	10	11,6	12
10274	Whole chicken g small-size fr b	8,58	1	8,58	12

- RETAIL
- FAMILY
- MAXI
- SINGLE
- BULK
- CUTS
- VACUUM-PACKED

# Traditional



**Chicken breast**



	Description	Cod. EAN	Approx. package kg	Packages per carton	Approx. carton weight (kg)	Shelf life (days)
10501	Chicken breast, super, fr a	-	3	4	12	12
10551	Corn-fed chicken breast, super, fr a	-	3	4	12	12
10565	Boneless, corn-fed chicken breast 2kg, vacuum packed	-	2,475	4	9,9	21
10499	Chicken breast, maxi, 1.2kg, fr a	2521610000000	1,5	8	12	9
10506	Chicken breast, super, 2.5kg, fr a	-	3	4	12	12
10519	Chicken breast, super, 2.5kg small box, fr a	-	3	2	6	12
10552	Corn-fed chicken breast, super, 2.5kg, fr a	-	2,6	4	10,4	12
10561	Boneless chicken breast, vac pack, horeca	2521610000000	2,1	2	4,2	20
10553	Corn-fed chicken breast, super, 2.5kg small box, fr a	-	3	2	6	12
10503	Chicken breast fr b		2,8	4	11,2	12
10556	Chicken breast pieces, vac pack		2	4	8	21
10960	Boneless chicken x2, vac pack		3,4	4	13,6	20
10529	Corn-fed chicken breast fr b		2,8	4	11,2	12

**Chicken breast**



10508	Chicken breast, bulk super fr a	-	13	1	13	12
10560	Chicken breast, skin-on with bone fr a	-	18	1	18	12
10571	Chicken breast, skin-on with bone cal fr a	-	11	1	11	12



**Chicken wings**



	Description	Approx. package kg	Packages per carton	Approx. carton weight (kg)	Shelf life (days)
10403	Chicken wings fr a	1,26	7	8,82	9
10409	Chicken wings, maxi fr a	2,5	2	5	10
10459	Corn-fed chicken wings, maxi fr a	2,5	2	5	10
10412	Corn-fed whole chicken wings, large-size pieces, maxi	3	2	6	10
10413	Pol fuso-ala stick sf maxi	2	2	4	10
68994	Pol ali 1° 2° falange maxi fr	2,25	2	4,5	10



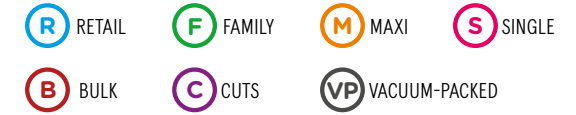
**Chicken wings**



10402	Unseparated chicken wings, large-size pieces fra	11,78	1	11,78	10
10452	Unseparated, corn-fed chicken wings, large-size pieces fr a	11,4	1	11,4	12
10411	Unseparated chicken wings fr a	12	1	12	10
10407	Pol ali n/s b fr	8,75	1	8,75	10
10457	Pol g ali n/s b fr	11,4	1	11,4	12



# Traditional



## Chicken thigh



	Description	Approx. package kg	Packages per carton	Approx. carton weight (kg)	Shelf life (days)
10323	Chicken thigh - maxi, fr a	2,25	2	4,5	10
10373	Corn-fed chicken thigh - maxi fr a	2,61	2	5,22	10
10326	Chicken thigh x8, vac pack, cal 140-160g	1,2	3	3,6	20
10348	Chicken thigh x8, vac pack, cal 170-190g	1,44	3	4,32	20
10389	Boneless chicken thigh, vac-pac	12	1	12	12
10367	Boneless, skinless chicken thigh, vac pack, vol	2,5	4	10	21



## Chicken legs



	Description	Approx. package kg	Packages per carton	Approx. carton weight (kg)	Shelf life (days)
10321	Chicken legs, maxi fr a	2,52	2	5,04	10
10371	Corn-fed chicken legs, maxi fa a	2,52	2	5,04	10
10346	Chicken legs, maxi, large size fr a	3,2	2	6,4	10
10370	Corn-fed chicken legs, maxi, large size fr a	3,2	2	6,4	10
10302	Boneless chicken legs, vac pack fr a	0,84	7	5,88	11
10312	Chicken legs/2, medium-size pieces fr a	2,8	2	5,6	10
10298	Chicken legs x10, vac-pac, cal 215-245g	2,4	2	4,8	20
10380	Chicken legs x10 vac pack, cal 245-275g	2,75	2	5,5	20
10297	Corn-fed chicken legs x10, vac pack, cal 180-200g	2,1	2	4,2	20
43312	Chicken legs/2, medium-size pieces fr a	13	1	13	12
10293	Chicken legs x40, cal 225-255g	9,6	1	9,6	12

## Chicken quarters



10319	Untucked chicken quarters, large-size pieces fr a	12	1	12	12
10369	Corn-fed untucked chicken quarters, large-size pieces, fr a	12	1	12	12
10375	Corn-fed chicken quarters, medium-size fr a pieces	12	1	12	12
10343	Untucked chicken quarters, medium-size pieces fr a	12	1	12	12
10378	Untucked, corn-fed chicken quarters, large-size pieces fr a	12	1	12	12
10317	Boneless chicken quarters fr b	11,2	1	11,2	12
10362	Untucked chicken quarters, large-size pieces COP fr a	12	1	12	12



## Chicken drumsticks



	Description	Approx. package kg	Packages per carton	Approx. carton weight (kg)	Shelf life (days)
10322	Chicken drumsticks, maxi fr a	3,24	2	6,48	11
10372	Corn-fed chicken drumsticks, maxi fr a	3,24	2	6,48	10
10331	Chicken drumsticks x8, vac pack, cal 140-160g	1,2	3	3,6	20
10330	Chicken drumsticks x8, vac pack, cal 120-140g	1,04	3	3,12	20



## Cuori di filetto



	Description	Approx. package kg	Packages per carton	Approx. carton weight (kg)	Shelf life (days)
10498	Pol cuori di filetto maxi ama	1,25	4	5	10



## Pollo 1/4 post



	Description	Approx. package kg	Packages per carton	Approx. carton weight (kg)	Shelf life (days)
10318	Pol 1/4 post ho fra cassa std	10	1	10	12

# Traditional



## Chicken liver



	Description	Cod. EAN	Approx. package kg	Packages per carton	Approx. carton weight (kg)	Shelf life (days)
16038	Chic. liver, 350g, pack. fr a	2265540000000	0,35	8	2,8	8
16095	Chicken liver, 350g, small pack. fr a	2265540000000	0,33	5	1,65	8

## Chicken liver



	Description	Cod. EAN	Approx. package kg	Packages per carton	Approx. carton weight (kg)	Shelf life (days)
43101	Chic. liver/hearts, 1kg, vac pack	2266030000000	1	14	14	12
10604	Chic. liver, 10kg	-	10	1	10	9
10614	Chic. liver/hearts, 0.5kg, vac pack, small pack.	-	0,5	4	2	12



## Chicken giblets



	Description	Cod. EAN	Approx. package kg	Packages per carton	Approx. carton weight (kg)	Shelf life (days)
16039	Chick. giblets, 350g, packaged	2265570000000	0,35	8	2,8	8
16096	Chick. giblets, 350g, small pack.	2265570000000	0,35	5	1,75	8

## Chicken giblets



	Description	Cod. EAN	Approx. package kg	Packages per carton	Approx. carton weight (kg)	Shelf life (days)
10623	Chick. giblets, 1kg, vac pack	-	1	14	14	12
10615	Chick. giblets, 0.5kg, vac pack, small pack.	-	0,5	4	2	12

## Chicken giblets



10702	Chick. backs to dissect	-	12	1	12	12
-------	-------------------------	---	----	---	----	----



## Turkey breast



	Description	Approx. package kg	Packages per carton	Approx. carton weight (kg)	Shelf life (days)
11506	Turkey breast, female fr a	4,4	4	17,6	12
11523	Turkey breast, female, vac pack fr a	4	2	8	20
11820	Turkey medallions, maxi fr a	2,4	4	9,6	10
11417	Sliced turkey breast, maxi fr a	2,5	4	10	10
11508	Turkey breast, male, vac pack fr a	5	4	20	20
11510	Turkey breast, male, without medallion, vac pack fr a	5	4	20	20
11505	Turkey breast, male fr a	5	4	20	12
11524	Boneless turkey breast, male, skin-on, vac pack fr a	5,5	4	22	20
11526	Turkey breast, male, euro, 1 lobe, vac pack	2,2	6	13,2	20
11534	Turkey breast, male, without medallion, vac pack, small fr a	5	2	10	20
11503	Turkey breast, male, large pieces, vac pack fr a	5	4	20	20
11530	Boneless turkey breast, male, skin-on, vac pack fr a	5,5	4	22	30

## Turkey breast



11520	Boneless turkey breast, male, skin-on fr a	20	1	20	12
11522	Turkey breast, male, vac pack, 2 per box fr a	5	2	10	20
11521	Turkey breast, male, vac pack, 1 per pack	5	1	5	20
11541	Turkey breast, male, without medallion, industry	18	1	18	12

# Traditional

- R RETAIL
- F FAMILY
- M MAXI
- S SINGLE
- B BULK
- C CUTS
- VP VACUUM-PACKED



**Full male turkey**



	Description	Approx. package kg	Packages per carton	Approx. carton weight (kg)	Shelf life (days)
11201	Whole turkey, male fr a	26	1	26	12
11213	Whole turkey, male, 1 per pack fr a	15	1	15	12
11314	Turkey crown, male fr a	8,5	3	25,5	12



**Full female turkey**



	Description	Approx. package kg	Packages per carton	Approx. carton weight (kg)	Shelf life (days)
11202	Whole turkey, female fr a	6	3	18	12



**Turkey leg**



	Description	Approx. package kg	Packages per carton	Approx. carton weight (kg)	Shelf life (days)
11327	Boneless turkey leg, female, skin-on, vac pack fr a	3,8	4	15,2	20

**Turkey leg**



11302	Turkey thigh, male fr a	8	1	8	12
-------	-------------------------	---	---	---	----



**Female turkey drumsticks**



	Description	Approx. package kg	Packages per carton	Approx. carton weight (kg)	Shelf life (days)
11321	Turkey drumsticks, female, maxi, fr a	3,04	2	6,08	9



**Male turkey drumsticks**



	Description	Approx. package kg	Packages per carton	Approx. carton weight (kg)	Shelf life (days)
11320	Turkey drumsticks, male, maxi, fr a	4	2	8	10



**Turkey thigh**



	Description	Approx. package kg	Packages per carton	Approx. carton weight (kg)	Shelf life (days)
11323	Turkey thigh, female, maxi, fr a	3,3	2	6,6	9
11322	Turkey thigh, male, maxi, fr a	3,75	2	7,5	10
11535	Boneless, skinless turkey thigh, male, vac pack, fr a	4,5	3	13,5	20

# Traditional

- R RETAIL
- F FAMILY
- M MAXI
- S SINGLE
- B BULK
- C CUTS
- VP VACUUM-PACKED



## Turkey wings

M

Description	Approx. package kg	Packages per carton	Approx. carton weight (kg)	Shelf life (days)
11410 Turkey wings, male, maxi fr a	3,6	2	7,2	10
11412 Turkey wings, female, maxi fr a	3,6	2	7,2	10

## Other turkey cuts

M

Description	Approx. package kg	Packages per carton	Approx. carton weight (kg)	Shelf life (days)
10624 Turkey giblets, vac pack	1	14	14	12
10619 Turkey giblets, vac pack, small pack	1	4	4	12
11307 Turkey thigh pieces, vac pack	2	4	8	20
11605 Turkey heart	2	6	12	9

## Other turkey cuts

B

11701 Turkey neck	13	1	13	9
-------------------	----	---	----	---



## Whole turkey hen

M

Description	Approx. package kg	Packages per carton	Approx. carton weight (kg)	Shelf life (days)
11206 Fresh small whole turkey hen	2,65	4	10,6	9



## Whole turkey hen

B

Description	Approx. package kg	Packages per carton	Approx. carton weight (kg)	Shelf life (days)
11203 Fresh small whole turkey hen	2,65	4	10,6	12



## Traditional turkey hen

B

Description	Approx. package kg	Packages per carton	Approx. carton weight (kg)	Shelf life (days)
11103 Fresh small whole traditional turkey hen	3,00	4	12	12



# Amadori

## *Other poultry and rabbit*

With whole hens or cockerel, farmyard chicken, quail, rabbit, guinea hen, duck, squab, and capon, the Amadori range of white meats has it all, and all of the highest quality for all who love more sophisticated flavours and dishes, such as stuffed guinea fowl or roast rabbit.



# Other poultry products



**Whole hen, packaged**

UM	EAN Code	Approx. package kg	Pieces per package	Packages per carton	Approx. carton weight (kg)	Shelf life (days)
12405	kg 2522810000000	1	1	6	6	9



**Small whole hen, bulk**

UM	EAN Code	Approx. package kg	Pieces per package	Packages per carton	Approx. carton weight (kg)	Shelf life (days)
12202	kg -	1,15	1	4	4,6	12



**Cockerel, packaged**

UM	EAN Code	Approx. package kg	Pieces per package	Packages per carton	Approx. carton weight (kg)	Shelf life (days)
10205	kg 2266050000000	0,52	1	7	3,64	10



**Farmyard chicken, bulk**

UM	EAN Code	Approx. package kg	Pieces per package	Packages per carton	Approx. carton weight (kg)	Shelf life (days)
10106	kg -	2	1	3	6	12



**Quail, packaged**

UM	EAN Code	Approx. package kg	Pieces per package	Packages per carton	Approx. carton weight (kg)	Shelf life (days)
13118	PI kg 2266020000000	0,6	4	4	2,4	10



**Quail, bulk**

UM	EAN Code	Approx. package kg	Pieces per package	Packages per carton	Approx. carton weight (kg)	Shelf life (days)
13117	PI kg -	1,6	10	2	3,2	10

# Other poultry products



**Whole rabbit CF**

UM	EAN Code	Approx. package kg	Pieces per package	Packages per carton	Approx. carton weight (kg)	Shelf life (days)
----	----------	--------------------	--------------------	---------------------	----------------------------	-------------------

12405	kg	2522810000000	1	1	6	6	9
-------	----	---------------	---	---	---	---	---

**Whole rabbit s/o sv fr a**

14204	kg	-	0,8	1	5	4	14
-------	----	---	-----	---	---	---	----

**Rabbit extra SF**

14214	kg	-	4,275	3	1	4,275	14
-------	----	---	-------	---	---	-------	----

**Rabbit 1,2/1,4 kg SF**

14215	kg	-	1,3	1	6	7,8	14
-------	----	---	-----	---	---	-----	----

**Rabbit 1,4/1,6 kg SF**

14202	kg	-	1,5	1	5	7,5	9
-------	----	---	-----	---	---	-----	---

**Rabbit oltre 1,6 kg SF**

14216	kg	-	1,6	0	5	8	14
-------	----	---	-----	---	---	---	----



**Whole guinea hen, bulk**

UM	EAN Code	Approx. package kg	Pieces per package	Packages per carton	Approx. carton weight (kg)	Shelf life (days)
----	----------	--------------------	--------------------	---------------------	----------------------------	-------------------

15201	kg	-	1,1	1	4	4,4	12
-------	----	---	-----	---	---	-----	----

**Traditional guinea hen, bulk**

15101	kg	-	1,45	1	4	5,8	12
-------	----	---	------	---	---	-----	----



**Traditional duck, bulk**

UM	EAN Code	Approx. package kg	Pieces per package	Packages per carton	Approx. carton weight (kg)	Shelf life (days)
----	----------	--------------------	--------------------	---------------------	----------------------------	-------------------

14302	kg	-	1,8	0	3	5,4	12
-------	----	---	-----	---	---	-----	----

**Duck breast, vacuum-packed**

14304	kg	-	0,8	1	8	6,4	18
-------	----	---	-----	---	---	-----	----

**Plucked pidgeon, bulk**

UM	EAN Code	Approx. package kg	Pieces per package	Packages per carton	Approx. carton weight (kg)	Shelf life (days)
----	----------	--------------------	--------------------	---------------------	----------------------------	-------------------

14401	kg	-	0,45	0	4	1,8	12
-------	----	---	------	---	---	-----	----



# Other poultry products



## Traditional capon, packaged

UM	EAN Code	Approx. package kg	Pieces per package	Packages per carton	Approx. carton weight (kg)	Shelf life (days)
10630	kg 2522850000000	2,25	1	4	9	10

## Traditional capon, bulk

10103	kg -	2,25	1	5	11,25	12
-------	------	------	---	---	-------	----

## Whole capon, bulk

10126	kg -	2	1	5	10	12
-------	------	---	---	---	----	----

## Whole capon, packaged antibiotic-free

10631	kg 2522550000000	2	1	4	8	10
-------	------------------	---	---	---	---	----

## Whole capon with head and legs, antibiotic-free, bulk

10130	kg -	2,5	1	2	4,5	12
-------	------	-----	---	---	-----	----



# Amadori

## Eggs

From 100% Italian hens, raised without antibiotics, cage-free, organic, or free-range, Amadori eggs are all fresh and wholesome and come through an integrated value chain with certified traceability. You see it on every shell, stamped with an image of Italy. For the utmost practicality and creativity in the kitchen, Amadori eggs are also available pasteurized, in pourable cartons or handy resealable bottles.



# Eggs



**Fresh eggs x 4 ORGANIC**

	EAN code	Weight category	Eggs per package	Packages per box	Boxes per layer	Layers per pallet	Shelf life (days)
12641	8006473900450	VC	4	96	6	9	28



**Fresh eggs x 6 ORGANIC**

	EAN code	Weight category	Eggs per package	Packages per box	Boxes per layer	Layers per pallet	Shelf life (days)
12667	8006473905738	VC	6	96	6	9	28



**Fresh eggs from outdoor farming systems**

	EAN code	Weight category	Eggs per package	Packages per box	Boxes per layer	Layers per pallet	Shelf life (days)
12605	8006473904724	VC	6	96	6	9	28



**Fresh eggs from ground-raised hen with no antibiotics x6**

	EAN code	Weight category	Eggs per package	Packages per box	Boxes per layer	Layers per pallet	Shelf life (days)
12601	8006473904816	VC	6	96	6	9	28



**Fresh eggs from ground-raised hen with no antibiotics x10**

	EAN code	Weight category	Eggs per package	Packages per box	Boxes per layer	Layers per pallet	Shelf life (days)
12600	8006473905745	VC	10	200	6	5	28



**Fresh eggs from ground-raised hen with no antibiotics x6 - female chicks pink**

	EAN code	Weight category	Eggs per package	Packages per box	Boxes per layer	Layers per pallet	Shelf life (days)
76026	8006473906407	VC	6	96	6	9	28

# Eggs



**Eggs x2**

	EAN code	Weight category	Eggs per package	Packages per box	Boxes per layer	Layers per pallet	Shelf life (days)
12620	8006473022404	VC	2	24	10	10	28



**Eggs x4**

	EAN code	Weight category	Eggs per package	Packages per box	Boxes per layer	Layers per pallet	Shelf life (days)
12625	8006473900320	VC	4	96	6	9	28



**Eggs x6**

	EAN code	Weight category	Eggs per package	Packages per box	Boxes per layer	Layers per pallet	Shelf life (days)
12616	8006473021605	VC	6	96	6	9	28

**Eggs x6 24 packs**

12607	8006473021605	VC	6	144	10	4	28
-------	---------------	----	---	-----	----	---	----



**Eggs x10**

	EAN code	Weight category	Eggs per package	Packages per box	Boxes per layer	Layers per pallet	Shelf life (days)
12628	8006473900474	VC	10	200	6	5	28

**Eggs x8+2 free**

12626	8006473900337	VC	10	200	6	5	28
-------	---------------	----	----	-----	---	---	----



# Eggs



**Large eggs x6 L**

	EAN code	Weight category	Eggs per package	Packages per box	Boxes per layer	Layers per pallet	Shelf life (days)
12606	8006473905080	(L)	6	96	6	9	28



**Extra-Large eggs x6 XL**

	EAN code	Weight category	Eggs per package	Packages per box	Boxes per layer	Layers per pallet	Shelf life (days)
76025	8006473905097	(XL)	6	120	10	4	28



**Eggs M 8 cf x30 ama**

	EAN code	Weight category	Eggs per package	Packages per box	Boxes per layer	Layers per pallet	Shelf life (days)
12674	8006473905271	(M)	30	240	4	4	28

**Eggs L 8 cf x30 ama**

12675	8006473905288	(L)	30	240	4	4	28
-------	---------------	-----	----	-----	---	---	----



**Yellow eggs for pasta 330g x6**

	EAN code	Weight category	Eggs per package	Packages per box	Boxes per layer	Layers per pallet	Shelf life (days)
12693	8006473905066	(VC)	6	144	6	7	28



**Yellow eggs for pasta x10**

	EAN code	Weight category	Eggs per package	Packages per box	Boxes per layer	Layers per pallet	Shelf life (days)
12694	8006473905073	(VC)	10	200	6	5	28

# Eggs



**Medium eggs 53/63 gr. x6**

	EAN code	Weight category	Eggs per package	Packages per box	Boxes per layer	Layers per pallet	Shelf life (days)
12610	8006473000204	(M)	6	144	6	7	28



**Large eggs 63/73 gr. x6**

	EAN code	Weight category	Eggs per package	Packages per box	Boxes per layer	Layers per pallet	Shelf life (days)
12609	8006473000303	(L)	6	144	6	7	28



**Eggs M 8 x30 for pasta**

	EAN code	Weight category	Eggs per package	Packages per box	Boxes per layer	Layers per pallet	Shelf life (days)
12656	8006473024903	(M)	30	240	4	4	28

**Eggs L 8 x30 for pasta**

	EAN code	Weight category	Eggs per package	Packages per box	Boxes per layer	Layers per pallet	Shelf life (days)
12644	8006473900498	(L)	30	240	4	4	28



**Extra-Large eggs x6**

	EAN code	Weight category	Eggs per package	Packages per box	Boxes per layer	Layers per pallet	Shelf life (days)
12608	8006473024606	(XL)	6	120	10	4	28



**Medium-size eggs x10**

	EAN code	Weight category	Eggs per package	Packages per box	Boxes per layer	Layers per pallet	Shelf life (days)
12614	8006473021100	(M)	10	160	7	5	28



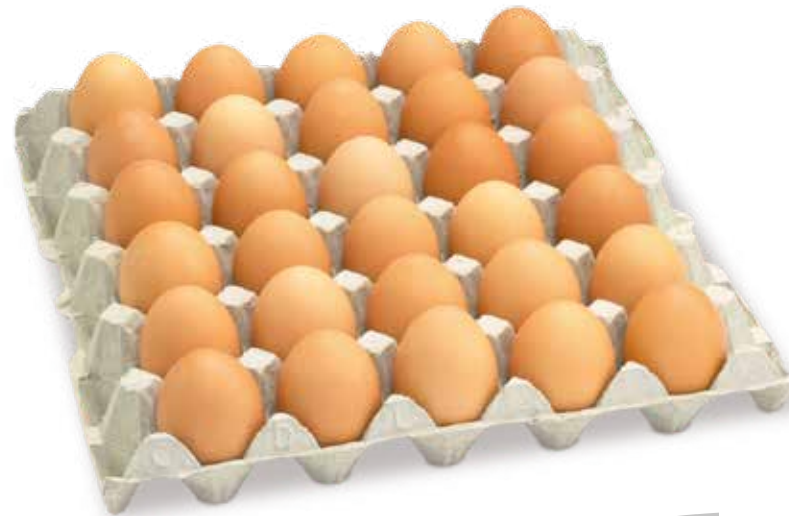
**Yellow eggs for pasta 350g**

	EAN code	Weight category	Eggs per package	Packages per box	Boxes per layer	Layers per pallet	Shelf life (days)
12617	8006473022107	(VC)	6	144	6	7	28

**Yellow eggs for pasta M x10**

	EAN code	Weight category	Eggs per package	Packages per box	Boxes per layer	Layers per pallet	Shelf life (days)
12622	8006473126225	(M)	10	200	6	5	28

# Eggs in bulk



Eggs in bulk, ground-raised, for pasta <span style="float: right;">(S)</span>							
Description	Weight category	Eggs per package	Packages per box	Boxes per layer	Layers per pallet	Shelf life (days)	Shelf life (gg)
12931	Size M eggs in bulk, ground-raised, for pasta	(M)	30	90	12	8	28
12929	Size L eggs in bulk, ground-raised, for pasta	(L)	30	90	12	8	28

Eggs in bulk, ground-raised <span style="float: right;">(B)</span>						
Description	Weight category	Eggs per package	Packages per box	Boxes per layer	Layers per pallet	Shelf life (days)
12623	Size M extra-fresh, free-range eggs, bulk x90	(M)	30	90	3	8
12624	Size L extra-fresh, free-range eggs, bulk x90	(L)	30	90	8	28
12921	Size L free-range eggs, bulk x180	(L)	30	180	8	7
12922	Size M free-range eggs, bulk x180	(M)	30	180	8	7

Eggs in bulk <span style="float: right;">(B)</span>						
Description	Weight category	Eggs per package	Packages per box	Boxes per layer	Layers per pallet	Shelf life (days)
12621	Size S eggs, bulk x180	(S)	30	180	8	4
12834	Size M eggs, bulk x90	(M)	30	90	8	6
12832	Size M eggs, bulk x90 for pasta	(M)	30	90	8	6
12613	Size M eggs, bulk x180	(M)	30	180	8	4
12718	Size M eggs, bulk x180 for pasta	(M)	180	180	6	4
12833	Size L eggs, bulk x90	(L)	30	90	8	6
12837	Size L sf x90 box for pasta	(L)	30	90	8	6
12612	Size L eggs, bulk x180	(L)	30	180	8	4
12831	Size L eggs, bulk x180 for pasta	(L)	30	180	8	4
12654	Size XL eggs, bulk x100	(XL)	20	100	8	4
12659	Size XL eggs, bulk x100 for pasta	(XL)	20	100	8	4

Eggs in bulk, ORGANIC <span style="float: right;">(B)</span>						
Description	Weight category	Eggs per package	Packages per box	Boxes per layer	Layers per pallet	Shelf life (days)
12642	Organic eggs, bulk, 90	(VC)	30	90	8	6

100%  
Italian eggs!

# Pasteurised, pourable eggs eggs from cage-free hens



## Pasteurised eggs

Description	Approx. package kg	Pieces per package	Packages per carton	Approx. carton weight (kg)	Shelf life (days)
12950 Blended eggs, ground-raised	1	1	10	10	40
12951 Blended eggs, ground-raised, for pasta	1	1	10	10	40
12952 Egg yolks, ground-raised	1	1	10	10	40
12953 Egg yolks, ground-raised, for pasta	1	1	10	10	40
12954 Blended eggs, ground-raised pi	1	1	4	4	40
12955 Blended eggs, ground-raised, for pasta pi	1	1	4	4	40
12956 Egg yolks, ground-raised pi	1	1	4	4	40
12957 Egg yolks, ground-raised, for pasta pi	1	1	4	4	40
12958 Egg whites sweetened 50% for desserts	1,25	1	10	12,5	180
12959 Egg whites, ground-raised	1	1	10	10	40
12960 Egg whites, ground-raised pi	1	1	4	4	40
12961 Blended eggs, BIO	1	1	10	10	30
12963 Egg yolks, ground-raised 250gr	0,25	1	10	2,5	40
12964 Egg whites, ground-raised 250gr	0,25	1	10	2,5	40





# Amadori

## Frozen foods

Both practical and delicious, our line of frozen foods features a selection of Amadori's best fresh products with the added convenience of having all that premium, 100% Italian chicken and turkey goodness close at hand when you need it. That includes all the breaded products you love, our meatballs, and other Amadori specialities like chicken strips, wings and kebab, not to mention frankfurters, and a range of uncooked cuts and formats conveniently packaged to meet your every need.



Our Value Chain  
CONTROLLED FOOD PRODUCTION



# Frozen



**Nuggets**



UM	EAN code	Pack. weight (kg)	Pieces per pack.	Pack. per carton	Approx carton weight (kg)	Shelf life (days)	Packs per layer	Layers per pallet	Boxes per pallet
30670	nr 8006473901914	0,3	16	9	2,7	540	12	7	84



**Gran Burger**



UM	EAN code	Pack. weight (kg)	Pieces per pack.	Pack. per carton	Approx carton weight (kg)	Shelf life (days)	Packs per layer	Layers per pallet	Boxes per pallet
30680	nr 8006473903406	0,28	2	9	2,52	540	12	7	84



**Crunchy cutlet**



UM	EAN code	Pack. weight (kg)	Pieces per pack.	Pack. per carton	Approx carton weight (kg)	Shelf life (days)	Packs per layer	Layers per pallet	Boxes per pallet
30671	nr 8006473901921	0,3	3	9	2,7	540	12	7	84



**Escalope with spinach**



UM	EAN code	Pack. weight (kg)	Pieces per pack.	Pack. per carton	Approx carton weight (kg)	Shelf life (days)	Packs per layer	Layers per pallet	Boxes per pallet
30672	nr 8006473901938	0,3	3	9	2,7	540	12	7	84



**Cordon bleu**



UM	EAN code	Pack. weight (kg)	Pieces per pack.	Pack. per carton	Approx carton weight (kg)	Shelf life (days)	Packs per layer	Layers per pallet	Boxes per pallet
30673	nr 8006473901945	0,25	2	9	2,25	540	12	7	84



**Chicken fingers**



UM	EAN code	Pack. weight (kg)	Pieces per pack.	Pack. per carton	Approx carton weight (kg)	Shelf life (days)	Packs per layer	Layers per pallet	Boxes per pallet
30850	nr 8006473902218	0,28	10	9	2,52	450	12	7	84

# Frozen

- R RETAIL
- F FAMILY
- M MAXI
- S SINGLE
- B BULK
- C CUTS
- VP VACUUM-PACKED



**Nuggets 700g**



UM	EAN code	Pack. weight (kg)	Pieces per pack.	Pack. per carton	Approx. weight (Kg)	Shelf life (days)	Packs per layer	Layers per pallet	Boxes per pallet
30675 nr	8006473902003	0,7	37	4	2,8	540	12	16	192



**Gran Burger 700g**



UM	EAN code	Pack. weight (kg)	Pieces per pack.	Pack. per carton	Approx. weight (Kg)	Shelf life (days)	Packs per layer	Layers per pallet	Boxes per pallet
30681 nr	8006473902041	0,70	5	4	2,80	540	12	16	192



**Chicken fillet cutlet 700g**



UM	EAN code	Pack. weight (kg)	Pieces per pack.	Pack. per carton	Approx. weight (Kg)	Shelf life (days)	Packs per layer	Layers per pallet	Boxes per pallet
30676 nr	8006473902010	0,7	7	4	2,8	540	12	16	192

**NOVITÀ!**



**Chicky Sticks 350g sram**



UM	Codice EAN	Peso conf. kg ca.	Pzi per conf.	Conf. per cassa	Peso cassa kg ca.	Shelf life (gg)	Imballi per strato	Strati per pallet	Cart. per pallet
00000 nr	000000	00	00	00	00	00	00	00	00



**Escalope with spinach 700g**



UM	EAN code	Pack. weight (kg)	Pieces per pack.	Pack. per carton	Approx. weight (Kg)	Shelf life (days)	Packs per layer	Layers per pallet	Boxes per pallet
30677 nr	8006473902027	0,7	7	4	2,8	540	12	16	192



**Cotoletta sottile 450 gr sram**



UM	Codice EAN	Peso conf. kg ca.	Pzi per conf.	Conf. per cassa	Peso cassa kg ca.	Shelf life (gg)	Imballi per strato	Strati per pallet	Cart. per pallet
76390 nr	xxxx	0,45	x	x	x	x	x	x	x

# Frozen

- R RETAIL
- F FAMILY
- M MAXI
- S SINGLE
- B BULK
- C CUTS
- VP VACUUM-PACKED



**Chicken cutlet "all in one piece" XL 1kg** M

UM	EAN code	Pack. weight (kg)	Pieces per pack.	Pack. per carton	Approx. carton weight (kg)	Shelf life (days)	Packs per layer	Layers per pallet	Boxes per pallet
30937 nr	8006473905912	1,00	5	3	3	540	12	11	132



**Cheese and ham cordon bleu 750g** F

UM	EAN code	Pack. weight (kg)	Pieces per pack.	Pack. per carton	Approx. carton weight (kg)	Shelf life (days)	Packs per layer	Layers per pallet	Boxes per pallet
30678 nr	8006473902034	0,75	6	4	3	540	12	16	192



**Nuggets pastel AMA 3kg sr** M

UM	EAN code	Pack. weight (kg)	Pieces per pack.	Pack. per carton	Approx. carton weight (kg)	Shelf life (days)	Packs per layer	Layers per pallet	Boxes per pallet
76070 nr	8006473906605	1	50	3	3	540	12	11	132

**NOVITÀ!**



**Alette impanate gr.350 sram** R

UM	Codice EAN	Peso conf. kg ca.	P.zi per conf.	Conf. per cassa	Peso cassa kg ca.	Shelf life (gg)	Imballi per strato	Strati per pallet	Cart. per pallet
76388 nr	XXXX	0,45	X	X	X	X	X	X	X

*Gluten-free Flavour-packed!*



**Nuggets** R

UM	EAN Code	Approx. package kg	Pieces per package	Packages per carton	Approx. carton weight (kg)	Shelf life (days)
30668 nr	8006473902836	0,32	16	6	1,92	365



**Chicken fillet cutlet** R

UM	EAN Code	Approx. package kg	Pieces per package	Packages per carton	Approx. carton weight (kg)	Shelf life (days)
30669 nr	8006473902843	0,3	3	6	1,8	365

# Frozen

- R RETAIL
- F FAMILY
- M MAXI
- S SINGLE
- B BULK
- C CUTS
- VP VACUUM-PACKED

*All your favourites, frozen*



**Le Birbe POPS 350g** R

UM	EAN code	Pack. weight (kg)	Pieces per pack.	Pack. per carton	Approx carton weight (kg)	Shelf life (days)	Packs per layer	Layers per pallet	Boxes per pallet
30934	nr 8006473905882	0,35	45	6	2,1	450	12	16	192

**Le Birbe POPS 1kg** M

UM	EAN code	Pack. weight (kg)	Pieces per pack.	Pack. per carton	Approx carton weight (kg)	Shelf life (days)	Packs per layer	Layers per pallet	Boxes per pallet
30935	nr 8006473905899	1,00	135	3	3	540	12	11	132



**Le Birbe Rings Surg 350g** R

UM	EAN code	Pack. weight (kg)	Pieces per pack.	Pack. per carton	Approx carton weight (kg)	Shelf life (days)	Packs per layer	Layers per pallet	Boxes per pallet
76067	nr 8006473906537	0,35	17	6	2,1	450	12	16	192

**Le Birbe Rings Surg 1kg** M

UM	EAN code	Pack. weight (kg)	Pieces per pack.	Pack. per carton	Approx carton weight (kg)	Shelf life (days)	Packs per layer	Layers per pallet	Boxes per pallet
76064	nr 8006473906523	1	50	3	3	450	12	11	132



**Frozen Meatballs 1kg** M

UM	EAN code	Pack. weight (kg)	Pieces per pack.	Pack. per carton	Approx carton weight (kg)	Shelf life (days)	Packs per layer	Layers per pallet	Boxes per pallet
30936	nr 8006473905905	1,00	50	3	3	365	12	11	132

# Frozen

- R RETAIL
- F FAMILY
- M MAXI
- S SINGLE
- B BULK
- C CUTS
- VP VACUUM-PACKED



**Sliced chicken 350g**



UM	EAN code	Pack. weight (kg)	Pieces per pack.	Pack. per carton	Approx carton weight (Kg)	Shelf life (days)	Packs per layer	Layers per pallet	Boxes per pallet
----	----------	-------------------	------------------	------------------	---------------------------	-------------------	-----------------	-------------------	------------------

30651	nr 8006473901976	0,35	24	6	2,1	450	12	16	192
-------	------------------	------	----	---	-----	-----	----	----	-----

**Sliced chicken 700g**



UM	EAN code	Pack. weight (kg)	Pieces per pack.	Pack. per carton	Approx carton weight (Kg)	Shelf life (days)	Packs per layer	Layers per pallet	Boxes per pallet
----	----------	-------------------	------------------	------------------	---------------------------	-------------------	-----------------	-------------------	------------------

30655	nr 8006473902065	0,7	47	4	2,8	450	12	16	192
-------	------------------	-----	----	---	-----	-----	----	----	-----

**Sliced chicken 1kg**



UM	EAN code	Pack. weight (kg)	Pieces per pack.	Pack. per carton	Approx carton weight (Kg)	Shelf life (days)	Packs per layer	Layers per pallet	Boxes per pallet
----	----------	-------------------	------------------	------------------	---------------------------	-------------------	-----------------	-------------------	------------------

30562	nr 8006473905608	1	70	3	3	540	12	11	132
-------	------------------	---	----	---	---	-----	----	----	-----



**Spicy wings 350g**



UM	EAN code	Pack. weight (kg)	Pieces per pack.	Pack. per carton	Approx carton weight (Kg)	Shelf life (days)	Packs per layer	Layers per pallet	Boxes per pallet
----	----------	-------------------	------------------	------------------	---------------------------	-------------------	-----------------	-------------------	------------------

30653	nr 8006473901990	0,35	10	6	2,1	365	12	16	192
-------	------------------	------	----	---	-----	-----	----	----	-----

**Spicy wings 700g**



UM	EAN code	Pack. weight (kg)	Pieces per pack.	Pack. per carton	Approx carton weight (Kg)	Shelf life (days)	Packs per layer	Layers per pallet	Boxes per pallet
----	----------	-------------------	------------------	------------------	---------------------------	-------------------	-----------------	-------------------	------------------

30657	nr 8006473902089	0,7	19	4	2,8	365	12	16	192
-------	------------------	-----	----	---	-----	-----	----	----	-----

**Spicy wings 1kg**



UM	EAN code	Pack. weight (kg)	Pieces per pack.	Pack. per carton	Approx carton weight (Kg)	Shelf life (days)	Packs per layer	Layers per pallet	Boxes per pallet
----	----------	-------------------	------------------	------------------	---------------------------	-------------------	-----------------	-------------------	------------------

30933	nr 8006473905615	1	20	3	3	450	12	11	132
-------	------------------	---	----	---	---	-----	----	----	-----



**Kebab 350g**



UM	EAN code	Pack. weight (kg)	Pieces per pack.	Pack. per carton	Approx carton weight (Kg)	Shelf life (days)	Packs per layer	Layers per pallet	Boxes per pallet
----	----------	-------------------	------------------	------------------	---------------------------	-------------------	-----------------	-------------------	------------------

30652	nr 8006473901983	0,35	25	6	2,1	450	12	16	192
-------	------------------	------	----	---	-----	-----	----	----	-----

**Kebab 700g**



UM	EAN code	Pack. weight (kg)	Pieces per pack.	Pack. per carton	Approx carton weight (Kg)	Shelf life (days)	Packs per layer	Layers per pallet	Boxes per pallet
----	----------	-------------------	------------------	------------------	---------------------------	-------------------	-----------------	-------------------	------------------

30656	nr 8006473902072	0,7	50	4	2,8	450	12	16	192
-------	------------------	-----	----	---	-----	-----	----	----	-----

# Frozen

- R RETAIL
- F FAMILY
- M MAXI
- S SINGLE
- B BULK
- C CUTS
- VP VACUUM-PACKED



**Frozen chicken thighs 1kg**



UM	EAN code	Pack. weight (kg)	Pieces per pack.	Pack. per carton	Approx carton weight (Kg)	Shelf life (days)	Packs per layer	Layers per pallet	Boxes per pallet
30316 nr	8006473015000	1	7	3	3	730	10	11	110



**Frozen chicken drumsticks 1kg**



UM	EAN code	Pack. weight (kg)	Pieces per pack.	Pack. per carton	Approx carton weight (Kg)	Shelf life (days)	Packs per layer	Layers per pallet	Boxes per pallet
30315 nr	8006473014959	1	8	3	3	730	10	11	110



**Whole frozen chicken**



UM	EAN code	Pack. weight (kg)	Pieces per pack.	Pack. per carton	Approx carton weight (kg)	Shelf life (days)	Packs per layer	Layers per pallet	Boxes per pallet
30202 kg	2264870000000	1,1	1	6	6,6	720	10	9	90



**Frozen chicken breast 700g**



UM	EAN code	Pack. weight (kg)	Pieces per pack.	Pack. per carton	Approx carton weight (Kg)	Shelf life (days)	Packs per layer	Layers per pallet	Boxes per pallet
30523 nr	8006473014850	0,7	7	4	2,8	730	10	7	70



**Frozen turkey breast 700g**



UM	EAN code	Pack. weight (kg)	Pieces per pack.	Pack. per carton	Approx carton weight (Kg)	Shelf life (days)	Packs per layer	Layers per pallet	Boxes per pallet
31514 nr	8006473014904	0,7	7	4	2,8	730	10	7	70



**Frozen chicken legs x 6**



UM	EAN code	Pack. weight (kg)	Pieces per pack.	Pack. per carton	Approx carton weight (kg)	Shelf life (days)	Packs per layer	Layers per pallet	Boxes per pallet
30391 kg	-	1,38	6	4	5,52	720	4	14	56



# Frozen

- R RETAIL
- F FAMILY
- M MAXI
- S SINGLE
- B BULK
- C CUTS
- VP VACUUM-PACKED



## Frozen chicken breast slices (R)

UM	EAN code	Pack. weight (kg)	Pieces per pack.	Pack. per carton	Approx carton weight (Kg)	Shelf life (days)	Packs per layer	Layers per pallet	Boxes per pallet
30499 kg	2522240000000	0,36	3	11	4	720	10	9	90



## Frozen chicken drumsticks (R)

UM	EAN code	Pack. weight (kg)	Pieces per pack.	Pack. per carton	Approx carton weight (Kg)	Shelf life (days)	Packs per layer	Layers per pallet	Boxes per pallet
30307 kg	2265050000000	0,4	3	8	3,2	730	10	11	110



## Frozen turkey breast slices (R)

UM	EAN code	Pack. weight (kg)	Pieces per pack.	Pack. per carton	Approx carton weight (Kg)	Shelf life (days)	Packs per layer	Layers per pallet	Boxes per pallet
31508 kg	2264980000000	0,36	3	11	4	720	10	9	90



## Frozen chicken pieces (R)

UM	EAN code	Pack. weight (kg)	Pieces per pack.	Pack. per carton	Approx carton weight (Kg)	Shelf life (days)	Packs per layer	Layers per pallet	Boxes per pallet
30818 kg	-	0,54	5	10	5,4	720	10	9	90



## Frozen chicken wings (R)

UM	EAN code	Pack. weight (kg)	Pieces per pack.	Pack. per carton	Approx carton weight (Kg)	Shelf life (days)	Packs per layer	Layers per pallet	Boxes per pallet
30403 kg	2265020000000	0,54	6	10	5,4	730	10	9	90

## Frozen cockerel (R)

UM	EAN code	Pack. weight (kg)	Pieces per pack.	Pack. per carton	Approx carton weight (Kg)	Shelf life (days)	Packs per layer	Layers per pallet	Boxes per pallet
36102 kg	2264960000000	0,46	1	12	5,52	730	4	22	88

# Frozen



## Frozen Classic Buona Domenica meatloaf roll R

UM	EAN code	Pack. weight (kg)	Pieces per pack.	Pack. per carton	Approx carton weight (Kg)	Shelf life (days)	Packs per layer	Layers per pallet	Boxes per pallet
31810	kg -	0,7	1	7	4,9	365	4	22	88

## Frozen Buona Domenica vegetables & cheese

31811	kg -	0,7	1	7	4,9	365	4	22	88
-------	------	-----	---	---	-----	-----	---	----	----

## Frozen Buona Domenica speck & cheese

31809	kg -	0,7	1	7	4,9	365	4	22	88
-------	------	-----	---	---	-----	-----	---	----	----

## Frozen Buona Domenica ricotta & spinach

31814	kg -	0,7	1	7	4,9	365	4	22	88
-------	------	-----	---	---	-----	-----	---	----	----

## Buona Domenica scamorza cheese & porcini mushrooms

31812	kg -	0,7	1	7	4,9	365	4	22	88
-------	------	-----	---	---	-----	-----	---	----	----

## Buona Domenica Pecorino Romano DOP cheese & Artichokes

31799	kg -	0,7	1	7	4,9	365	4	22	88
-------	------	-----	---	---	-----	-----	---	----	----



## 100% chicken/turkey frankfurters, frozen 250g R

UM	EAN code	Pack. weight (kg)	Pieces per pack.	Pack. per carton	Approx carton weight (Kg)	Shelf life (days)	Packs per layer	Layers per pallet	Boxes per pallet
42098	nr 8006473903093	0,25	3	12	3	540	16	14	224



## 100% pork frankfurters, frozen 250g R

UM	EAN code	Pack. weight (kg)	Pieces per pack.	Pack. per carton	Approx carton weight (Kg)	Shelf life (days)	Packs per layer	Layers per pallet	Boxes per pallet
42099	nr 8006473903154	0,25	3	12	3	540	16	14	224



## Evviva chicken/turkey frankfurters, frozen 250g R

UM	EAN code	Pack. weight (kg)	Pieces per pack.	Pack. per carton	Approx carton weight (Kg)	Shelf life (days)	Packs per layer	Layers per pallet	Boxes per pallet
42270	nr 8006473000600	0,25	3	12	3,0	540	16	14	224



## Evviva pork/turkey frankfurters, frozen 250g R

UM	EAN code	Pack. weight (kg)	Pieces per pack.	Pack. per carton	Approx carton weight (Kg)	Shelf life (days)	Packs per layer	Layers per pallet	Boxes per pallet
42295	nr 8006473006503	0,25	3	12	3,0	540	16	14	224

# Frozen



**Frozen rustic turkey skewers IQF** B

UM	EAN code	Pack. weight (kg)	Pieces per pack.	Pack. per carton	Approx carton weight (Kg)	Shelf life (days)	Packs per layer	Layers per pallet	Boxes per pallet
31417	Kg -	5,6	34	1	5,6	365	4	22	88

**Frozen turkey skewers IQF** B

UM	EAN code	Pack. weight (kg)	Pieces per pack.	Pack. per carton	Approx carton weight (Kg)	Shelf life (days)	Packs per layer	Layers per pallet	Boxes per pallet
31415	Kg -	5	37	1	5	365	4	22	88



**Frozen chicken roll** B

UM	EAN code	Pack. weight (kg)	Pieces per pack.	Pack. per carton	Approx carton weight (Kg)	Shelf life (days)	Packs per layer	Layers per pallet	Boxes per pallet
30802	Kg -	7,4	12	1	7,4	365	4	14	56

**Frozen turkey breast roll** B

UM	EAN code	Pack. weight (kg)	Pieces per pack.	Pack. per carton	Approx carton weight (Kg)	Shelf life (days)	Packs per layer	Layers per pallet	Boxes per pallet
31806	Kg -	12	6	1	12	365	4	14	56

**Frozen turkey roll** B

UM	EAN code	Pack. weight (kg)	Pieces per pack.	Pack. per carton	Approx carton weight (Kg)	Shelf life (days)	Packs per layer	Layers per pallet	Boxes per pallet
31804	Kg -	7,4	12	1	7,4	365	4	14	56



**Frozen classic turkey burgers** B

UM	EAN code	Pack. weight (kg)	Pieces per pack.	Pack. per carton	Approx carton weight (Kg)	Shelf life (days)	Packs per layer	Layers per pallet	Boxes per pallet
31419	Kg -	1,2	12	2	2,4	365	10	11	110

**Frozen turkey/chicken sausage** B

UM	EAN code	Pack. weight (kg)	Pieces per pack.	Pack. per carton	Approx carton weight (Kg)	Shelf life (days)	Packs per layer	Layers per pallet	Boxes per pallet
30622	Kg -	2,8	40	2	5,6	365	4	22	88

**Frozen pork sausages** B

UM	EAN code	Pack. weight (kg)	Pieces per pack.	Pack. per carton	Approx carton weight (Kg)	Shelf life (days)	Packs per layer	Layers per pallet	Boxes per pallet
30623	Kg -	2,8	40	2	5,6	365	4	22	88

# Frozen



## Frozen chicken fillet cutlets 3 kg



UM	EAN code	Pack. weight (kg)	Pieces per pack.	Pack. per carton	Approx carton weight (Kg)	Shelf life (days)	Packs per layer	Layers per pallet	Boxes per pallet	
30751	Kg	-	1	10	3	3	540	12	11	132

## Frozen escalopes with spinach 3 kg



30752	Kg	-	1	10	3	3	540	12	11	132
-------	----	---	---	----	---	---	-----	----	----	-----

## Frozen rustic chicken cutlets 2,5 kg



30859	Kg	-	0,98	7	3	2,94	450	12	16	192
-------	----	---	------	---	---	------	-----	----	----	-----

## Frozen Raffinata chicken cutlets 2,55 kg



30860	Kg	-	2,55	17	1	2,55	450	12	16	192
-------	----	---	------	----	---	------	-----	----	----	-----

## Frozen chicken cutlets 3 kg



30851	Kg	-	1	10	3	3	540	12	11	132
-------	----	---	---	----	---	---	-----	----	----	-----

## Frozen chicken thin-cut cutlet 3kg



30686	nr	-	3	20	1	3	450	12	16	192
-------	----	---	---	----	---	---	-----	----	----	-----

## Frozen chicken crunchy cutlets 2,5 kg



30881	Kg	-	1	10	3	3	540	12	16	192
-------	----	---	---	----	---	---	-----	----	----	-----

## Frozen GranBurger 2,94 kg



30888	Kg	-	0,98	7	3	2,94	540	12	11	132
-------	----	---	------	---	---	------	-----	----	----	-----



## Frozen chicken nuggets 3 kg



UM	EAN code	Pack. weight (kg)	Pieces per pack.	Pack. per carton	Approx carton weight (Kg)	Shelf life (days)	Packs per layer	Layers per pallet	Boxes per pallet	
30754	Kg	-	1	50	3	3	540	12	11	132

## Frozen chicken speck & Emmenthal nuggets 3 kg



30880	Kg	-	1	55	3	3	540	12	16	192
-------	----	---	---	----	---	---	-----	----	----	-----



## Frozen chicky sticks 2,5 kg



UM	EAN code	Pack. weight (kg)	Pieces per pack.	Pack. per carton	Approx carton weight (Kg)	Shelf life (days)	Packs per layer	Layers per pallet	Boxes per pallet	
30853	Kg	-	2,5	167	1	2,5	540	12	16	192

## Frozen cooked chicken wings 2,5 kg



30731	Kg	-	2,5	62	1	2,5	450	12	16	192
-------	----	---	-----	----	---	-----	-----	----	----	-----

## Crispy meatballs 3kg frozen



30667	Kg	-	1	48	3	3	540	12	11	132
-------	----	---	---	----	---	---	-----	----	----	-----



## Frozen Cordon bleu ham and cheese 3 kg



UM	EAN code	Pack. weight (kg)	Pieces per pack.	Pack. per carton	Approx carton weight (Kg)	Shelf life (days)	Packs per layer	Layers per pallet	Boxes per pallet	
30753	Kg	-	1	8	3	3	540	12	11	132

## Frozen Jambieu 3 kg



30890	Kg	-	1	16	3	3	450	12	16	192
-------	----	---	---	----	---	---	-----	----	----	-----



## Frozen fried chicken 2,5 kg



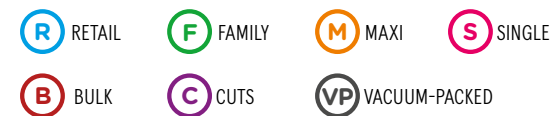
UM	EAN code	Pack. weight (kg)	Pieces per pack.	Pack. per carton	Approx carton weight (Kg)	Shelf life (days)	Packs per layer	Layers per pallet	Boxes per pallet	
30694	Kg	-	1	20	3	3	540	12	16	192

## Frozen Mex Chicken 2,5 kg



30695	Kg	-	1	50	3	3	450	12	16	192
-------	----	---	---	----	---	---	-----	----	----	-----

# Frozen



**Birichini fil.p.imp. sur 3kg** (B)

UM	EAN code	Pack. weight (kg)	Pieces per pack.	Pack. per carton	Approx carton weight (Kg)	Shelf life (days)	Packs per layer	Layers per pallet	Boxes per pallet	
30715	nr	-	1	30	3	3	540	12	11	132



**Buf. wings pic kg 2,5 sram** (B)

UM	EAN code	Pack. weight (kg)	Pieces per pack.	Pack. per carton	Approx carton weight (Kg)	Shelf life (days)	Packs per layer	Layers per pallet	Boxes per pallet	
30742	Kg	-	2,5	68	1	2,5	450	12	16	192



**Frozen beefburgers** (B)

UM	EAN Code	Approx. package kg	Pieces per package	Packages per carton	Approx. carton weight (kg)	Shelf life (days)	
36742	Kg	98006473367423	3,296	32	1	3,296	548



**Mucho gusto fil imp sur 2,94kg** (B)

UM	EAN code	Pack. weight (kg)	Pieces per pack.	Pack. per carton	Approx carton weight (Kg)	Shelf life (days)	Packs per layer	Layers per pallet	Boxes per pallet	
30716	nr	-	0,98	28	3	2,94	540	12	11	132

**Alette cotte impanate surg 2,5 kg** (B)

30731	Kg	-	2,5	62	1	2,5	450	12	16	192
-------	----	---	-----	----	---	-----	-----	----	----	-----

**Kebab Fette Tacc kg 2,5 sram** (B)

30637	Kg	-	2,5	170	1	2,5	540	12	16	192
-------	----	---	-----	-----	---	-----	-----	----	----	-----

**Tagliata Pollo kg 2,5 sram** (B)

30638	Kg	-	2,5	170	1	2,5	540	12	16	192
-------	----	---	-----	-----	---	-----	-----	----	----	-----

**Straccet Cosc Pol Mex 3kg SR** (B)

30639	Kg	-	1	67	3	3	450	12	11	132
-------	----	---	---	----	---	---	-----	----	----	-----

**Kebab Fette Pollo kg 2,5 sram** (B)

30649	-	-	2,5	170	1	2,5	450	12	16	192
-------	---	---	-----	-----	---	-----	-----	----	----	-----

**Ali cotte smok papr kg,2,5 sur** (B)

30916	nr	-	2,5	63	1	2,5	450	12	16	192
-------	----	---	-----	----	---	-----	-----	----	----	-----

**Frozen beefburgers 180g** (B)

36743	Kg	98006473367430	2,88	16	2	5,76	730
-------	----	----------------	------	----	---	------	-----

**Frozen beefburgers Dry-Aged** (B)

36744	Kg	98006473367447	3,6	20	1	3,6	540
-------	----	----------------	-----	----	---	-----	-----

**Straccetti pollo imp sur 3kg** (B)

UM	EAN code	Pack. weight (kg)	Pieces per pack.	Pack. per carton	Approx carton weight (Kg)	Shelf life (days)	Packs per layer	Layers per pallet	Boxes per pallet	
30591	nr	-	1	31	3	3	450	12	11	132

# Frozen

- R RETAIL
- F FAMILY
- M MAXI
- S SINGLE
- B BULK
- C CUTS
- VP VACUUM-PACKED



**Frozen rack of lamb**



UM	EAN Code	Approx. package kg	Pieces per package	Packages per carton	Approx. carton weight (kg)	Shelf life (days)
36117	Kg 98006473361179	1,5	1	10	15	720



**Frozen leg of lamb**



UM	EAN Code	Approx. package kg	Pieces per package	Packages per carton	Approx. carton weight (kg)	Shelf life (days)
36120	Kg 98006473361209	2	1	8	16	730



**Frozen shoulder of lamb pieces**



UM	EAN Code	Approx. package kg	Pieces per package	Packages per carton	Approx. carton weight (kg)	Shelf life (days)
36121	Kg 98006473361216	5	30	1	5	720



**Frozen pork chops, 180g**



UM	EAN Code	Approx. package kg	Pieces per package	Packages per carton	Approx. carton weight (kg)	Shelf life (days)
36204	Kg 98006473362046	5	28	1	5	720



**Frozen international pork loin**



UM	EAN Code	Approx. package kg	Pieces per package	Packages per carton	Approx. carton weight (kg)	Shelf life (days)
36203	Kg 98006473362039	18	3	1	18	540



**Frozen pork shank, half**



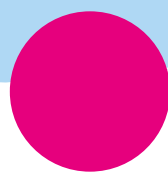
UM	EAN Code	Approx. package kg	Pieces per package	Packages per carton	Approx. carton weight (kg)	Shelf life (days)
36221	Kg 98006473362213	0,7	1	10	7	730

**Frozen pork shank**



36220	Kg 98006473362206	1,2	2	5	6	540
-------	-------------------	-----	---	---	---	-----

# Frozen

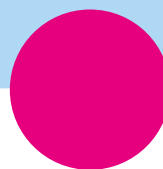


Whole chicken frozen sv ind							
UM	EAN Code	Approx. package kg	Pieces per package	Packages per carton	Approx. carton weight (kg)	Shelf life (days)	
30200	Kg 98006473302004	1	1	10	10	730	
Whole chicken 1200 frozen a							
30212	Kg 98006473302127	12	10	1	12	730	
Whole chicken 1000 frozen							
30223	Kg 98006473302233	10	10	1	10	730	
Whole chicken 1100 frozen a							
30225	Kg 98006473302257	11	10	1	11	730	
Whole chicken 1000 scosc. frozen a							
30230	Kg 98006473302301	1	1	10	10	730	
Whole chicken 1100 scosc. frozen a							
30231	Kg 98006473302318	1,1	1	10	11	730	
Whole chicken aromatizzato sco frozen							
43234	Kg 98006473432343	1	1	10	10	730	
Pol bustino frozen a							
30204	Kg 98006473302042	11,52	16	1	11,52	730	
Whole chicken 800 frozen a							
30205	Kg 98006473302059	8,64	12	1	8,64	730	
Whole chicken 900 frozen a							
30221	Kg 98006473302219	10,8	12	1	10,8	730	
Whole g chicken 1200 frozen a							
30262	Kg 98006473302622	12,1	10	1	12,1	730	
Whole g chicken 1000 frozen a							
30273	Kg 98006473302738	10	10	1	10	730	
Whole g chicken 1100 frozen a							
30275	Kg 98006473302752	11,1	10	1	11,1	730	
Pol g bustino frozen a							
30254	Kg 98006473302547	11,52	16	1	11,52	730	

Whole g chicken 800 frozen a							
UM	EAN Code	Approx. package kg	Pieces per package	Packages per carton	Approx. carton weight (kg)	Shelf life (days)	
30255	Kg 98006473302554	9,78	12	1	9,78	730	
Whole g chicken 900 frozen a							
30271	Kg 98006473302714	10,86	12	1	10,86	730	
Whole chicken 1300 frozen a							
30213	Kg 98006473302134	10,4	8	1	10,4	730	
Whole g chicken 1300 frozen a							
30263	Kg 98006473302639	10,4	8	1	10,4	730	
Chicken breast x 3 kg1 frozen a							
30503	Kg 98006473305036	1	3	11	11	730	
Chicken breast x2 kg1 frozen a							
30511	Kg 98006473305111	1	2	12	12	730	
Chicken breast frozen Ho							
30516	Kg 98006473305166	0,975	2	12	11,7	730	
Chicken breast x2 extragrosso frozen a							
30518	Kg 98006473305180	1,4	2	12	16,8	730	
Sliced chicken breast 2,4 kg iqf							
30524	Kg 98006473305241	0,8	8	3	2,4	730	
Sliced g chicken breast kg 1 frozen a							
30552	Kg 98006473305524	1,1	3	11	12,1	730	
Whole chicken med frozen b							
30214	Kg 98006473302141	10	10	1	10	730	
Whole chicken med/pes b frozen							
30226	Kg 98006473302264	11,6	10	1	11,6	730	
Pol g busto med/pes b frozen							
30227	Kg 98006473302271	11,6	10	1	11,6	730	
Pol g busto med frozen b							
30264	Kg 98006473302646	9,65	10	1	9,65	730	

Pol g busto pic frozen b							
UM	EAN Code	Approx. package kg	Pieces per package	Packages per carton	Approx. carton weight (kg)	Shelf life (days)	
30276	Kg 98006473302769	8,64	12	1	8,64	730	
Pol busto pic frozen b							
30277	Kg 98006473302776	8,58	12	1	8,58	730	
Pol cosciot 1/2 med frozen.a							
30312	Kg 98006473303124	10	28	1	10	730	
Pol cosciot 1/2 gr frozen							
30313	Kg 98006473303131	10	19	1	10	730	
Pol g quarto post m frozen a							
30352	Kg 98006473303520	10	28	1	10	730	
Pol g cosciot mez gr frozen a							
30363	Kg 98006473303636	10	19	1	10	730	
Pol coscia dis ms con GI							
30300	Kg 98006473303001	15	58	1	15	540	
Pol coscia cfam frozen a							
30324	Kg 98006473303247	0,54	2	10	5,4	730	
Pol ali non sep frozen a							
30404	Kg 98006473304046	10	36	1	10	730	
Pol ali non sep frozen b							
30407	Kg 98006473304077	10	27	1	10	730	
Pol.g ali non sep frozen.a							
30454	Kg 98006473304541	10	36	1	10	730	
Pol.g ali non sep frozen.b							
30457	Kg 98006473304572	10	27	1	10	730	
Pol alette in parti frozen cl.b							
30416	Kg 98006473304169	10	85	1	10	730	
Pol alette intere frozen cl.b							
30418	Kg 98006473304183	10	85	1	10	730	

# Frozen



<b>Pol g alette in parti frozen cl.b</b>							
UM	EAN Code	Approx. package kg	Pieces per package	Packages per carton	Approx. carton weight (kg)	Shelf life (days)	
30458	Kg 98006473304589	10	85	1	10	730	
<b>Frozen Chicken liver/c14x1</b>							
30608	Kg 98006473306088	1	16	14	14	540	
<b>Frozen Chicken liver kg 10</b>							
30612	Kg 98006473306125	10	400	1	10	540	
<b>Pol cuori kg 15 frozen</b>							
30614	Kg 98006473306149	15	0	1	15	540	
<b>Frozen Chicken giblets 12x1</b>							
30628	Kg 98006473306286	1	0	12	12	540	
<b>Frozen Chicken giblets a</b>							
30629	Kg 98006473306293	15	0	1	15	540	
<b>Frozen whole turkey m a</b>							
31201	Kg 98006473312010	13	1	2	26	540	
<b>Frozen whole turkey f a</b>							
31202	Kg 98006473312027	18	3	1	18	730	
<b>Tac rit. fesa fette ind frozen GI</b>							
31501	Kg 98006473315011	12	1	1	12	730	
<b>Frozen turkey breast m sv a</b>							
31505	Kg 98006473315059	5	1	3	15	899	
<b>Frozen Sliced turkey breast 2,4kg iqf</b>							
31515	Kg 98006473315158	0,8	8	3	2,4	730	
<b>Frozen turkey breast sv Ho</b>							
31517	Kg 98006473315172	5	1	3	15	730	
<b>Tac fesa carne macinat.frozen GI</b>							
31835	Kg 98006473318357	15	1	1	15	365	
<b>Frozen Male turkey leg a</b>							
31301	Kg 98006473313017	14,5	7	1	14,5	730	

<b>Tac m sovr dis ind frozen a</b>							
UM	EAN Code	Approx. package kg	Pieces per package	Packages per carton	Approx. carton weight (kg)	Shelf life (days)	
31313	Kg 98006473313130	15	16	1	15	540	
<b>Tac sovr carne macinat.frozen GI</b>							
31831	Kg 98006473318319	15	1	1	15	270	
<b>Tac f sovr dis ind frozen a</b>							
31312	Kg 98006473313123	15	25	1	15	540	
<b>Frozen turkey drumsticks m a</b>							
31303	Kg 98006473313031	10	11	1	10	730	
<b>Frozen turkey drumsticks m b</b>							
31304	Kg 98006473313048	10	11	1	10	730	
<b>Tac ossobuco frozen a GI</b>							
31813	Kg 98006473318135	12	0	1	12	540	
<b>Tac f fusi frozen a</b>							
31308	Kg 98006473313086	10	25	1	10	730	
<b>Tac ala stick 10 frozen a</b>							
31402	Kg 98006473314021	10	34	1	10	730	
<b>Tac m ala stick con punta frozen</b>							
31412	Kg 98006473314120	10	27	1	10	730	
<b>Tac m ala 10 frozen a</b>							
31414	Kg 98006473314144	10	16	1	10	730	
<b>Tac m punta ala sf 10kg frozen</b>							
31427	Kg 98006473314274	10	125	1	10	730	
<b>Tac m ala 10 frozen a</b>							
31428	Kg 98006473314281	10	16	1	10	730	
<b>Tac ala carne macinata frozen GI</b>							
31833	Kg 98006473318333	15	1	1	15	270	
<b>Tac f ala stick sf 10kg frozen</b>							
31404	Kg 98006473314045	10	72	1	10	730	

<b>Tac f ala intera con punta frozen</b>							
UM	EAN Code	Approx. package kg	Pieces per package	Packages per carton	Approx. carton weight (kg)	Shelf life (days)	
31411	Kg 98006473314113	10	28	1	10	730	
<b>Tac f ala 10 frozen a</b>							
31420	Kg 98006473314205	10	28	1	10	730	
<b>Tac f ala 10 frozen a</b>							
31429	Kg 98006473314298	10	28	1	10	730	
<b>Frozen turkey liver 1x10 kg</b>							
31604	Kg 98006473316049	10	1	1	10	540	
<b>Tac cuore frozen a</b>							
31610	Kg 98006473316100	10	0	1	10	540	
<b>Frozen Turkey giblets</b>							
31630	Kg 98006473316308	10	0	1	10	540	
<b>Frozen Turkey neck my</b>							
31807	Kg 98006473318074	10	22	1	10	540	
<b>Whole rabbit frozen a</b>							
34101	Kg 98006473341010	11,2	1	8	11,2	720	





# Amadori

## *Mister Meat*

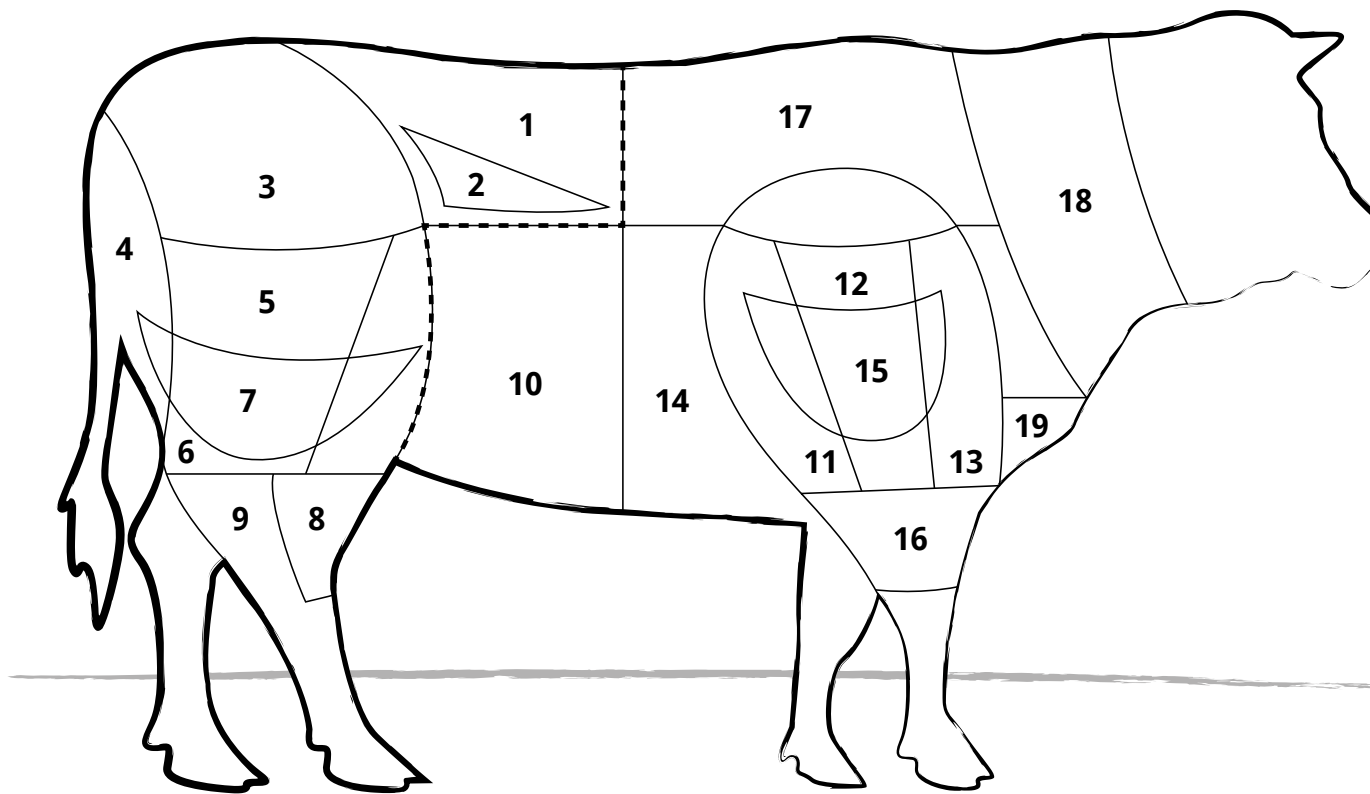
No line of proteins would be complete without some red meat, which we've brought together under our Mister Meat brand – a line of fresh, vacuum-packed meats in a range of cuts and types from around the world (including Italy, Ireland, Scotland, Argentina, Denmark, Austria, Germany and Poland), which Amadori selects with care and closely monitors, from packaging in the country of origin or at specialist processing sites right to your table. This includes our premium Norland scottona beef, hand-picked by expert butchers and specially aged for cuts of meat that are as tender as they are delicious. In addition to beef and horse meat, our Mister Meat line also extends to pork and lamb.



# Mister Meat

## bovine

### ILLUSTRATION OF ANATOMICAL CUTS

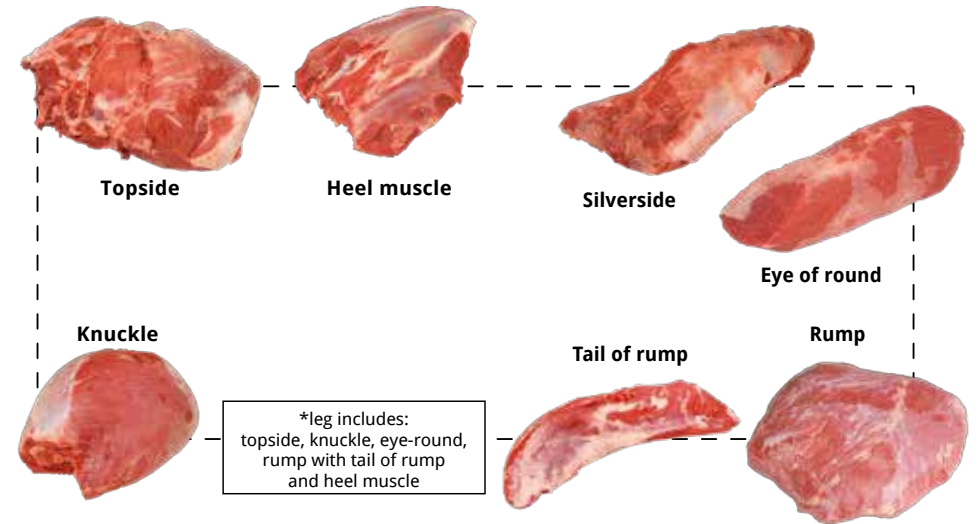
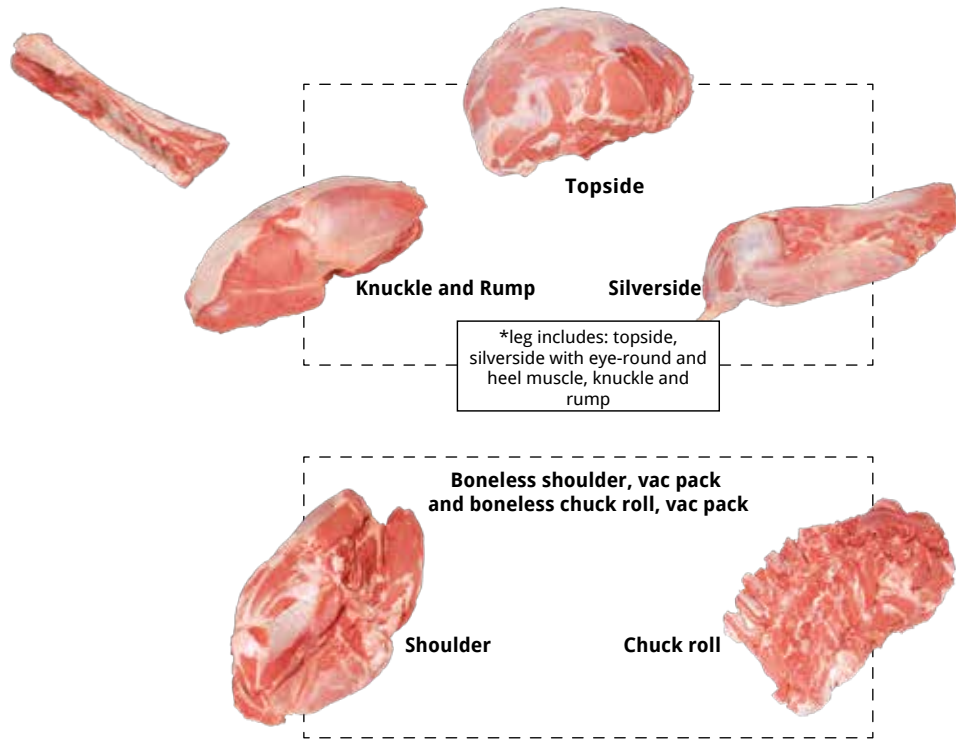


- 1 LOIN / ROAST BEEF
- 2 FILLET
- 3 RUMP
- 4 EYE OF ROUND
- 5 SILVERSIDE
- 6 KNUCKLE
- 7 TOPSIDE
- 8 HEEL
- 9 BACK SHANK
- 10 BELLY
- 11 LMC SPECIAL TRIM
- 12 TRIMMED FEATHER BLADE
- 13 CHUCK TENDER
- 14 BRISKET
- 15 LMC
- 16 SHIN
- 17 CHUCK ROLL
- 18 CHUCK NECK
- 19 BRISKET

The forequarter and hindquarter split is between ribs 5 and 6.

# Mister Meat

## bovine



### Veal up to 8 months

Description	Origin	Pieces per package	Package weight (kg)	Pack. per CRT	CRT weight (kg)	Shelf life (days)	Note
36298 Leg of veal, 3 pieces, vac pack	EU	1	6,000	3	18,00	30	Knuckle-rump, topside and silverside, with eye round
36612 Leg of veal, 3 pieces, vac pack	Italian	1	5,000	3	15,00	30	Knuckle-rump, topside and silverside, with eye round
36295 Veal loin, bone-in, vac pack	EU	1	8,500	1	8,50	30	One loin cut in half
36613 Veal loin, bone-in, vac pack	Italian	1	10,000	1	10,00	30	One loin cut in half
36257 Veal topside, vac pack	EU	1	4,000	2	8,00	30	
36266 Boneless veal, untrimmed, vac pack	EU	1	5,000	2	10,00	30	
36265 Boneless chuck roll, vac pack	EU	1	5,500	2	11,00	30	
36273 Shank with bone, vac pack	EU	1	2,000	4	8,00	30	

### Boneless shank

Description	Origin	Pieces per package	Package weight (kg)	Pack. per CRT	CRT weight (kg)	Shelf life (days)
36935 Boneless beef leg, heifer Poland	Poland	1	4,57	1	4,57	30

### Lean beef shank pieces

Description	Origin	Pieces per package	Package weight (kg)	Pack. per CRT	CRT weight (kg)	Shelf life (days)
36232 Beef, young bull	Ireland	1	3,5	3	10,50	30

# Mister Meat

## bovine



### Rump heart

The rump heart is the section continuing off the loin. It is one of the more noble leg cuts. It is used for:

- Pot roasts, stews, roast beef:
- Grilled steak
- Oven roasts.

Your average chef with good imagination could come up with a million things to do with a rump heart.



### Knuckle

As an anatomical base, it has the length of the thigh bone and the kneecap in the distal position. It is a prime cut and can be cooked in a variety of ways, either boiled or braised, in pot roasts and stewed cacciatora style. It's excellent for steaks and cutlets. The primary cooking method is as a casserole with plenty of liquid, preferably wine or beer.

### Rump

	Description	Origin	Pieces per package	Package weight (kg)	Pack. per CRT	CRT weight (kg)	Shelf life (days)
<b>36626</b>	Beef rump-heart, vac pack fr	France	1	6,500	2	13,00	30
<b>36233</b>	Irish beef rump, vac pack vac pack	Ireland	1	3,750	4	15	30
<b>36926</b>	Beef rump, vac pack	Poland	1	3,000	2	6,00	40
<b>36346</b>	Beef rump-heart, vac pack	Argentina	1	2,700	4	10,80	120
<b>36636</b>	Bov Ad scamone a cuore loc sv	-	1	6,5	1	6,5	30

### Knuckle

	Description	Origin	Pieces per package	Package weight (kg)	Pack. per CRT	CRT weight (kg)	Shelf life (days)
<b>36628</b>	Trimmed beef knuckle, fresh, vac pack	France	1	8,000	2	16,00	30
<b>36981</b>	Boneless knuckle, vac pack	Ireland	1	6,000	2	12,00	30
<b>36959</b>	Baby Beef knuckle, vac pack	Denmark	1	4,000	2	8,00	40
<b>36927</b>	Polish beef knuckle, vac pack	Poland	1	5,250	2	10,50	40
<b>36604</b>	Bov Ad noce pl loc sv	-	1	10	1	10	30

# Mister Meat

## bovine



### Topside

This cut fully occupies the inner thigh area and is almost triangular and/or round in shape. In terms of prize cuts, it rates with the rump, making it ideal for a wide range of uses. The topside can be used for a classic steak or cutlet. It is also great for breaded cutlets and all types of oven cooking.



### Eye of round

This cut occupies the lateral or posterior region of the leg. To locate it, slice into the space between the muscles between the topside and silverside. It is a prize cut which is ideal for cutlets and roast beef in particular. To the untrained eye, a well-served portion could be confused for a fillet.

### Tops

	Description	Origin	Pieces per package	Package weight (kg)	Pack. per CRT	CRT weight (kg)	Shelf life (days)
<b>36627</b>	Beef topside, vac pack	France	1	14,000	1	14,00	30
<b>36344</b>	Baby beef topside, vac pack	Denmark	1	7,000	2	14,00	30
<b>36236</b>	Beef, topside, fr vac pack	Poland	1	9,500	1	9,50	40

### Eye of round

	Description	Origin	Pieces per package	Package weight (kg)	Pack. per CRT	CRT weight (kg)	Shelf life (days)
<b>36629</b>	Beef eye of round, vac pack	France	1	4,250	2	8,50	30
<b>36984</b>	Boneless beef eye of round, vac pack	Ireland	1	2,500	2	5,00	30
<b>36985</b>	Baby beef eye of round, vac pack	Denmark	1	1,900	5	9,50	30
<b>36928</b>	Beef eye of round, vac pack	Poland	1	2,500	2	5,00	40

# Mister Meat

## bovine



### Silverside

This cut occupies the lateral or posterior region of the leg. This cut is rectangular in shape and is assessed in terms of the height, species and age of the animal. It is not a gristly cut (like muscles), but it is not very tender. Cross-cuts are used for cutlets, steaks, stews, roast beef, pot roasts, and other roasts.

### Silverside

	Description	Origin	Pieces per package	Package weight (kg)	Pack. per CRT	CRT weight (kg)	Shelf life (days)	Note
<b>36293</b>	Beef silverside, vac pack	France	1	6,500	2	13,00	30	Squared
<b>36929</b>	Beef silverside, vac pack	Poland	1	4,250	2	8,50	40	Squared
<b>36605</b>	Bov Ad sottofesa loc sv	-	1	10	2	20	30	



### Pinacha

Picanha is a Brazilian cut of beef which is often referred to in English as rump cap. It has a triangular shape and weighs up to 1-1.1 kg. Along one of its three sides, it typically has a layer of fat about one centimetre thick.

### Pinacha

	Description	Origin	Pieces per package	Package weight (kg)	Pack. per CRT	CRT weight (kg)	Shelf life (days)
<b>36983</b>	Picanha beef EU vac pack	Ireland	1	1,200	5	6,00	30

# Mister Meat

## bovine



### Tail of rump

This is a leg cut directly below the knuckle and is used for meatloaves, stews, roasts, or rolls.

### Tail of rump

	Description	Origin	Pieces per package	Package weight (kg)	Pack. per CRT	CRT weight (kg)	Shelf life (days)
<b>36296</b>	Tail of rump beef	France	1	2,100	5	10,50	40



### Muscle or shank

In anatomical terms, this is the part of the animal that produces movement. This muscle is normally boiled due to the very thin layer of connective bone between one muscle and another (also called osso buco), which makes this cut especially tasty. The shank can be boiled, stewed, used in pot roasts or braised. Cooking in this way is very economical, as adding mashed potatoes or polenta to the sauce significantly increases the portion sizes or numbers.

### Muscle or shank

	Description	Origin	Pieces per package	Package weight (kg)	Pack. per CRT	CRT weight (kg)	Shelf life (days)
<b>36631</b>	Beef hind muscle, vac pack	France	1	3,500	5	17,50	30
<b>36967</b>	Beef hind muscle, vac pack	Poland	1	2,400	4	9,60	30



# Mister Meat

## bovine

### Heel muscle

This is from the hind quarter of the animal, near the leg. It is made up of a group of muscles and is highly regarded in culinary terms. To locate it, find the Achilles tendon and separate the muscle mass that partly surrounds the posterior section of the shin bone. It can be cut in a specific way for steaks. It is very good when cooked in liquid, such as for stews, pot roasts, braised and all types of casserole. It is also a good cut to prepare by boiling.

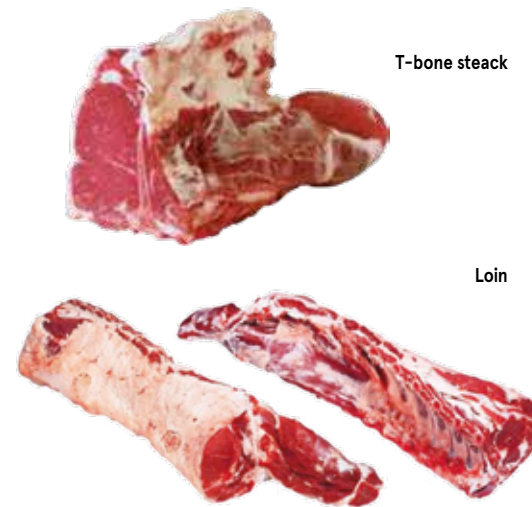


### Heel muscle

Description	Origin	Pieces per package	Package weight (kg)	Pack. per CRT	CRT weight (kg)	Shelf life (days)
<b>36630</b> Beef heel muscle, vac pack	France	1	4,000	4	16,00	30
<b>36269</b> Beef heel muscle, vac pack	Ireland	1	2,500	4	10,00	30
<b>36968</b> Beef heel muscle, vac pack	Poland	1	2,500	4	10,00	30

### Loin

This cut can be easily recognized in its natural form. The popular bistecca alla fiorentina is a beefsteak with an inverted T-shaped bone that must always include the tenderloin steak. This steak is normally thick, not beaten and cooked on cooling open coals. The meat should only be salted after blood has started to ripple from the meat; turn once and do not cook in sauce. If the bone has been removed, then the meat can be cooked in any sauce.



T-bone steak

Loin

### Loin

Description	Origin	Pieces per package	Package weight (kg)	Pack. per CRT	CRT weight (kg)	Shelf life (days)	Note
<b>36272</b> Beef T-bone steak, 3-bone and fillet	Ireland	1	12,000	1	12,00	30	
<b>36342</b> Baby beef loin with fillet, vac pack	Denmark	1	14,000	1	14,00	30	1 loin, bone-in, cut in half
<b>36238</b> Beef carvery rib, vac pack	Ireland (female, 6-8))	1	12,500	1	12,50	30	
<b>36936</b> Heifer loin, bone-in and fillet	Poland	1	8,500	2	17,00	40	
<b>36271</b> Beef loin with fillet, vac pack	Germany	1	24,000	1	24,00	30	1 loin, bone-in, cut in half

# Mister Meat

## bovine



### Carvery rib or Beef Rib

This cut can be easily recognized in its natural form. When the vertebrae and ribs (6-8) are present, the cut is called beef rib. This steak is normally thick, not beaten and cooked on cooling open coals. The meat should only be salted after blood has started to ripple from the meat; turn once and do not cook in sauce. If the bone has been removed, then the meat can be cooked in any sauce.

### Beef rib with bone

Description	Origin	Pieces per package	Package weight (kg)	Pack. per CRT	CRT weight (kg)	Shelf life (days)	Note
36648 Beef Rib, cap off	France	1	6,000	2	12,00	30	
36187 Beef carvery rib, vac pack	Ireland	1	4,500	2	9,00	30	Beef rib, 5-bone, stripped
01984 Irish beef carvery rib, with cap, vac pack	Ireland	1	8,500	1	8,50	30	
36925 Vacuum-packed adult beef ribeye w/fascia Poland	Poland	1	8,000	1	8	30	

### Bov Ad Tomahawk

Description	Pieces per package	Package weight (kg)	Pack. per CRT	CRT weight (kg)	Shelf life (days)
36651 Bov Ad Tomahawk	1	1,2	5	6	30

Strip loin



### Strip loin

This steak is normally thick, not beaten and cooked on cooling open coals. The meat should only be salted after blood has started to ripple from the meat; turn once and do not cook in sauce. If the bone has been removed, then the meat can be cooked in any sauce.

### Boneless loin, 8 ribs

Description	Origin	Pieces per package	Package weight (kg)	Pack. per CRT	CRT weight (kg)	Shelf life (days)	Note
36931 Boneless Beef Loin, vac pack	Poland	1	6,000	2	12,00	40	One Loin with cup
36638 Bov Ad Lombo c/o c/f loc sv	-	1	11	2	22	30	

### Roast beef

36639 Beef strip loin	France	1	5,000	2	10,00	30	One strip loin cut into two pieces
36337 Irish 3-rib, boneless beef strip loin, vac pack	Ireland	1	6,500	2	13,00	30	
36370 Boneless beef strip loin, vac pack	Argentina	1	5,000	3	15,00	120	Squared
36650 Angus beef strip loin, vac pack	Uruguay	1	4,000	2	8	120	

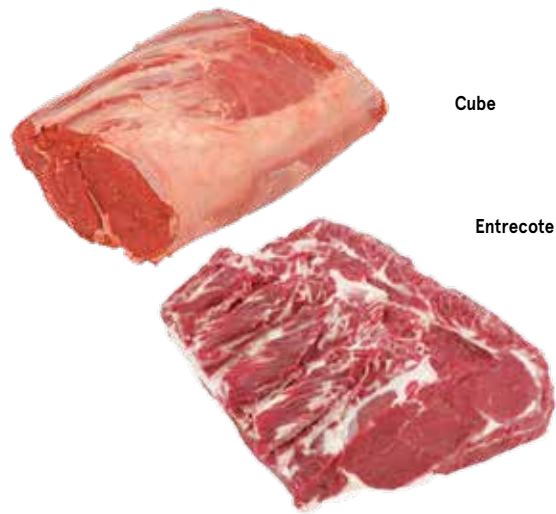


### Mini Skewers

Description	Pieces per package	Package weight (kg)	Pack. per CRT	CRT weight (kg)	Shelf life (days)
36654 Angus Beef Rib, mini skewers ATM	9	250	8	2	15

# Mister Meat

## bovine

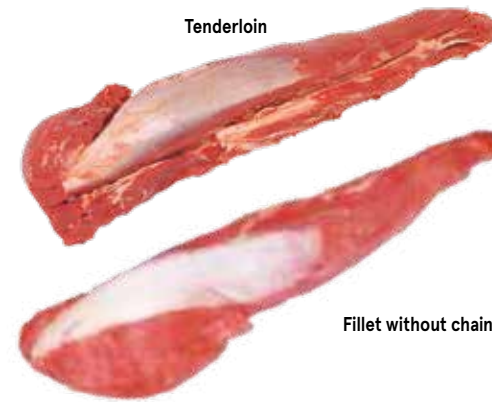


Cube

Entrecote

### Entrecote

This steak is usually grilled, not beaten and cooked on cooling open coals. The meat should only be salted after blood has started to ripple from the meat and turned once only.



Tenderloin

Fillet without chain

### Tenderloin

This meat comes from the lumbosacral region: the posterior part (head) lies next to the rump, the middle (body) and front (tail) parts lie below the vertebrae of the lower back and spine. It is one of the most popular cuts and therefore the most expensive. In Italy, demand for fillet steak outstrips the actual quantity that can be produced, as an average steer or heifer gives no more than two fillets, equalling 5–6 kg of beef.

### Entrecote

	Description	Origin	Pieces per package	Package weight (kg)	Pack. per CRT	CRT weight (kg)	Shelf life (days)	Note
36625	Beef Entrecote, cap-off	France	1	6,000	2	12,00	30	
36261	Beef Entrecote, vac pack	Ireland	1	3,500	2	7,00	30	Cube roll processing
36382	Beef Entrecote, vac pack	Scotland	1	3,000	2	6,00	30	Cube roll processing
36283	Beef Entrecote, vac pack	Poland	1	3,250	2	6,50	30	Cube roll processing
36367	Beef Entrecote, vac pack	Argentina	1	2,000	3	6,00	120	Cube roll processing
36640	Beef Entrecote, vac pack	Germany	1	3,500	3	10,50	30	Cube roll processing
36649	Angus Beef Entrecote, boneless, vac pack	Uruguay	1	2,500	3	7,5	120	

### Fillet

	Description	Origin	Pezzi per conf	Approx. package kg	Conf per CRT	CRT weight (kg)	Shelf life (days)	Note
36635	Beef fillet	France	1	4,000	2	8,00	30	
36256	Irish heifer fillet, vac pack	Ireland	1	2,400	2	4,80	30	
36288	Beef fillet	Poland	1	2,800	2	5,60	40	
36988	Beef fillet, vac pack	Argentina	1	1,650	6	9,90	120	Without chain

# Mister Meat

## bovine



Trimmed feather



LMC



### Shoulder

The shoulder is made up of various cuts:

- **LMC:** used for steaks, escalopes and braised beef
- **Chuck tender:** prepared by boiling or in pot roasts
- **Trimmed feather blade:** always boiled and served with green vegetable sauce
- **Shoulder muscle:** prepared by boiling or in pot roasts
- **Shin:** prepared by boiling or in stews.

### Trimmed feather

	Description	Origin	Pieces per package	Package weight (kg)	Pack. per CRT	CRT weight (kg)	Shelf life (days)
<b>36185</b>	Beef feather blade, vac pack	Ireland	1	2,800	3	8,40	30
<b>36379</b>	Beef feather blade, vac pack	Scotland	1	2,250	3	6,75	40
<b>36239</b>	Beef feather blade, vac pack	Poland	1	2,500	4	10	30

### Shoulder

	Description	Origin	Pieces per package	Package weight (kg)	Pack. per CRT	CRT weight (kg)	Shelf life (days)	Note
<b>36933</b>	Boneless beef shoulder, vac pack	Poland	1	10,000	1	10,00	40	Trimmed

# Mister Meat

## bovine



### Chuck roll

Generally, this cut is almost parallelepiped in shape. It is located between the end of the loin and the connection to the head (occipital). It includes the neck or chuck roll. The meat is extremely tasty and is known as the *boccone del cuoco* ("chef's morsel") in Italian. It is prepared by boiling or in pot roasts, or minced for use in a tasty meat sauce. Boneless steaks can be cut from the chuck roll, to be grilled or baked in foil.

### Chuck (neck or chuck roll)

	Description	Origin	Pieces per package	Package weight (kg)	Pack. per CRT	CRT weight (kg)	Shelf life (days)
36181	Beef chuck roll	Ireland	1	5,000	2	10,00	30
02807	Beef chuck roll, vac pack	Scotland	1	9,000	3	9,000	30
36292	Beef shoulder/chuck, vac pack	Denmark	1	6,750	2	13,50	30
36934	Boneless chuck, vac pack	Poland	1	13	1	13	40
36282	Bov Ad anima di reale sv	-	1	4	3	12	30
36302	Bov Ad Cuore di Reale Angus sv	-	2	7,5	1	7,5	30



Light cooked tripe



Ox tripe, vac pack



Sliced tripe

### Tripe

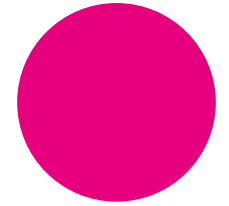
	Description	Pieces per package	Package weight (kg)	Pack. per CRT	CRT weight (kg)	Shelf life (days)
40201	Light cooked tripe	1	5,000	1	5,00	21
40203	Dark cooked tripe	1	5,000	1	5,00	21
35199	Ox tripe, vac pack	1	5,000	1	5,00	20
40204	Sliced tripe, vac pack	1	700	4	2,80	19



Skirt steaks

### Offal

	Description	Pieces per package	Package weight (kg)	Pack. per CRT	CRT weight (kg)	Shelf life (days)
36268	Beef skirt steaks, vac pack	3	700	5	3,50	30



**Rump heart**

Description	UM	Approx. package kg	Pieces per package	Packages per carton	Approx. carton weight (kg)	Shelf life (days)
36937 Bov. ad. scamone Norland sv	1	4	2	8	49	90



**Knuckle**

Description	UM	Approx. package kg	Pieces per package	Packages per carton	Approx. carton weight (kg)	Shelf life (days)
36938 Bov.ad. Noce Norland sv	1	4	2	8	49	90



**Chuck Roll**

Description	UM	Approx. package kg	Pieces per package	Packages per carton	Approx. carton weight (kg)	Shelf life (days)
36939 Bov. ad. chuck roll Norland sv	1	4,5	3	13,5	49	90



**Picanha**

Description	UM	Approx. package kg	Pieces per package	Packages per carton	Approx. carton weight (kg)	Shelf life (days)
76090 Bov. ad. Picanha Norland sv	1	1,5	4	6	49	90



**Longloin split in two**

Description	UM	Approx. package kg	Pieces per package	Packages per carton	Approx. carton weight (kg)	Shelf life (days)
36941 Bov Ad Lombate Norland sv	1	10	2	20	35	90

# Norland



**Oysterblade**

Description	UM	Approx. package kg	Pieces per package	Packages per carton	Approx. carton weight (kg)	Shelf life (days)
76089 Bov. ad. Copertina Norland sv	1	2	3	6	49	90



**Cuberoll**

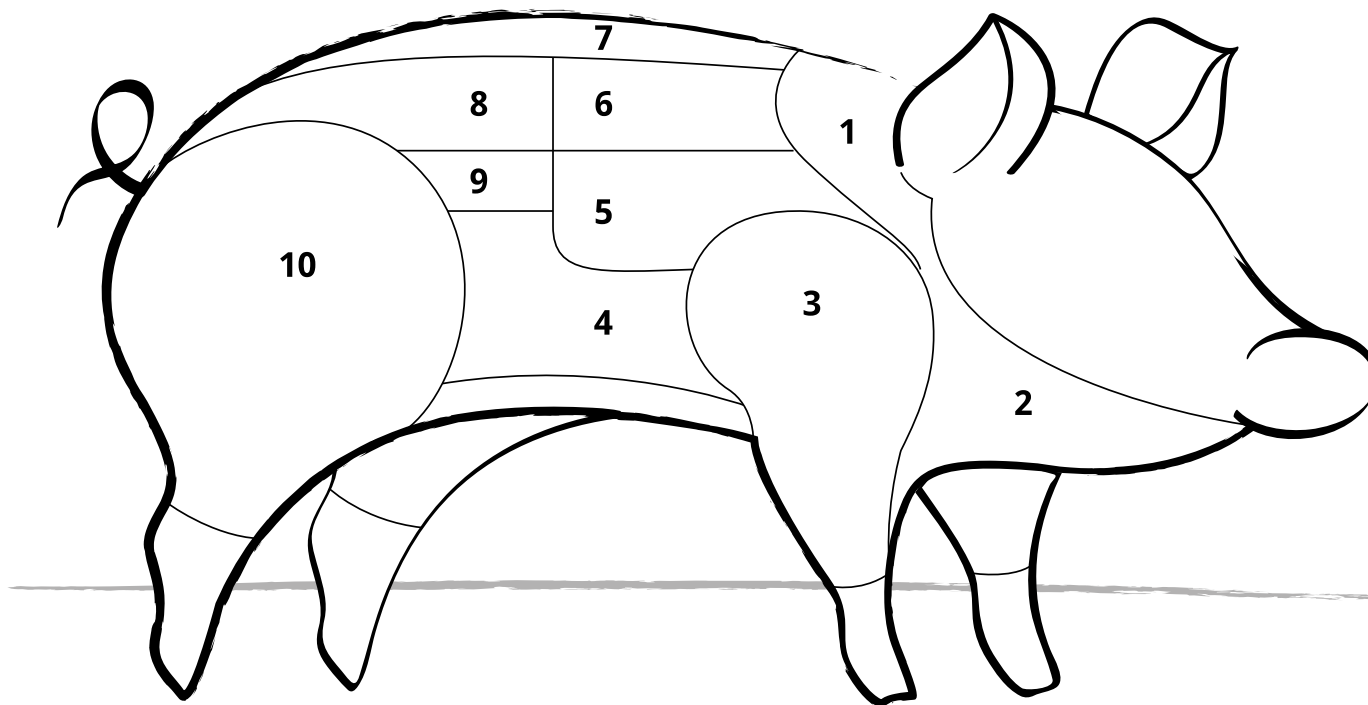
Description	UM	Approx. package kg	Pieces per package	Packages per carton	Approx. carton weight (kg)	Shelf life (days)
36940 Bov. ad. Cuberoll Norland sv	1	2	3	6	49	90



# Mister Meat

**pork**

## ILLUSTRATION OF ANATOMICAL CUTS

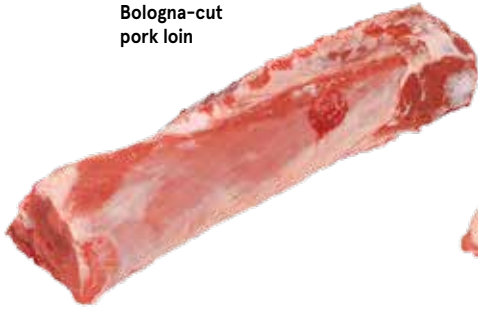


- 1 PORK NECK FILLET**
- 2 THROAT OR CHEEK**
- 3 SHOULDER**
- 4 BACON (BELLY)**
- 5 RIBS**
- 6 PORK CHOPS**
- 7 LARD**
- 8 PORK LOIN**
- 9 FILLET**
- 10 LEG**



# Mister Meat pork

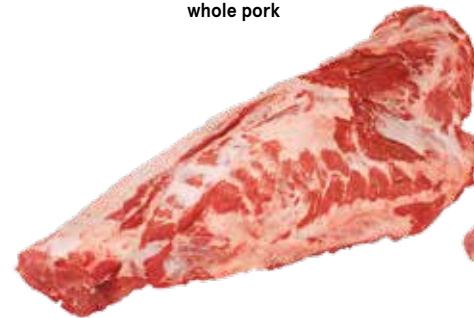
Bologna-cut  
pork loin



Boneless shoulder



Venice-cut  
whole pork



Venice-cut pork loin



## Boxed fresh pork

	Description	Pieces per package	Package weight (kg)	Pack. per CRT	CRT weight (kg)	Shelf life (days)
<b>36807</b>	Bologna-cut pork loin	1	7,000	2	14,00	12
<b>36811</b>	Boneless, rindless pork shoulder	1	6,750	2	13,50	12

## Boxed fresh pork

	Description	Pieces per package	Package weight (kg)	Pack. per CRT	CRT weight (kg)	Shelf life (days)
<b>36809</b>	Whole pork	1	15,000	1	15,00	12
<b>36808</b>	Venice-cut pork loin	1	11,000	2	22,00	12

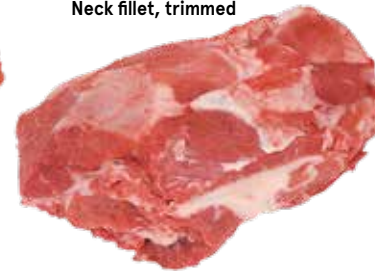
Neck fillet,  
bone-in



Ribs



Neck fillet, trimmed



## Boxed fresh pork

	Description	Pieces per package	Package weight (kg)	Pack. per CRT	CRT weight (kg)	Shelf life (days)
<b>36813</b>	Pork neck fillet, bone-in	1	3,500	2	7,00	12
<b>36812</b>	Pork neck fillet, boneless, trimmed	1	2,833	3	8,50	12
<b>36810</b>	Pork ribs	1	1,833	3	5,50	12
<b>36230</b>	Pork ribs EU sv	2	2	5	10	14

# Mister Meat

## pork

Boneless rindless belly, without fat flanchet



Italian boneless loin, without chain



Tenderloin



### Boxed fresh pork

	Description	Pieces per package	Package weight (kg)	Pack. per CRT	CRT weight (kg)	Shelf life (days)
<b>36815</b>	Bacon (belly), rind-on, without flanchet fat	1	6,500	2	13,00	12
<b>36814</b>	Bacon (belly), rindless, without flanchet fat	1	8,500	2	17,00	12
<b>36816</b>	Leg, gammon cut	1	13,000	1	13,00	12

### Fresh Italian pork, vac pack

	Description	Pieces per package	Package weight (kg)	Pack. per CRT	CRT weight (kg)	Shelf life (days)
<b>36222</b>	Pork loin, vac pack	1	4,500	3	13,50	30
<b>36211</b>	Pork loin, vac pack	3	1,250	4	5,00	20



International pork loin, without chain



### Fresh international pork, vac pack

	Description	Pieces per package	Package weight (kg)	Pack. per CRT	CRT weight (kg)	Shelf life (days)
<b>36555</b>	Pork loin, vac pack	1	4,000	3	12,00	20
<b>36247</b>	Pork shoulder, boneless, rindless, vac pack	1	4,500	4	18,00	20
<b>36248</b>	Pork neck fillet, trimmed, French, vac pack	1	2,500	8	20,00	20
<b>36249</b>	Bacon (belly), boneless (single ribbed), rind-on, long squared, vac pack	1	3,375	4	13,50	20
<b>36199</b>	Bacon (belly), with ribs, vac pack	1	6,000	2	12,00	14
<b>36200</b>	Deboned gammon, vac pack	1	6,000	2	12,00	20
<b>36244</b>	Pork middles, rind-on	1	9,00	2	18,00	20

# Mister Meat

## lamb / horse meat



Whole lamb



### Boxed lamb

	Description	Pieces per package	Package weight (kg)	Pack. per CRT	CRT weight (kg)	Shelf life (days)
40102	Fresh lamb, head and liver, 5/8 kg	1	7,000	1	7,00	12
40103	Fresh lamb, head and liver, 9/12 kg	1	10,000	1	10,00	12
40119	Fresh lamb, head and liver, 12/14 kg	1	13,000	1	13,00	12
40115	Whole lamb, light, boxed	1	13,000	1	13,00	12
40124	Agnello spalla sv	1	2,375	4	9,5	30

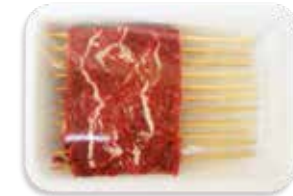
Lamb loin with bone



Shoulder



Leg of lamb



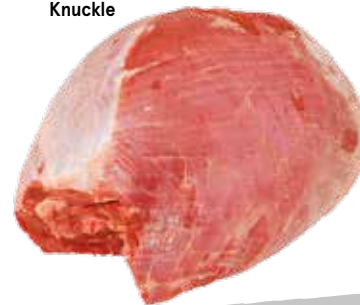
Mini skewers

### Lamb, vac pack



	Description	Pieces per package	Package weight (kg)	Pack. per CRT	CRT weight (kg)	Shelf life (days)
40112	Lamb loin with bone, PGI, vac pack	1	3,000	4	12,00	35
40114	Lamb shoulder, squared cut, PGI, vac pack	1	2,375	4	9,50	30
40101	Leg of lamb, PGI, vac pack	1	2,833	6	17,00	30
40106	Breast of lamb roll, PGI, vac pack	1	0,500	8	4,00	30
40122	Abruzzo lamb skewers, prot. atmosphere	18	0,465	4	1,86	8
40123	Mutton skewers, prot. atmosphere	20	0,465	4	1,86	9
40113	Agnello carre sv	1	3	3	12	35

Knuckle



Cutlets



### Horse meat

	Description	Pieces per package	Package weight (kg)	Pack. per CRT	CRT weight (kg)	Shelf life (days)
36363	Horse knuckle, vac pack	1	6,000	2	12,00	120
36360	Premium horse meat cutlets	4	0,290	6	1,74	20

# Amadori



Amadori firma una novità nel banco carni rosse: Mister Meat.

Una ricercata selezione, che comprende gustosi hamburger a base di pregiate carni di manzo - Scottona italiana e Angus irlandese - e le ribs di suino, in due sfiziose varianti di aromatizzazione, paprika e rosmarino o sale e pepe.

**CARNI  
ACCURATAMENTE  
SELEZIONATE  
DALLE  
MIGLIORI FILIERE!**

# Mister Meat

## carni selezionate



**Hamburger Scot 180g skin MM**

	EAN Code	Approx. package kg	Pieces per package	Packages per carton	Approx. carton weight (kg)	Shelf life (days)
76169	8006473906766	0,180	1	10	1,8	23



**Hamburger Bov.ad Angus 180g MM**

	EAN Code	Approx. package kg	Pieces per package	Packages per carton	Approx. carton weight (kg)	Shelf life (days)
76170	8006473906773	0,180	1	10	1,8	23



**Tartare di Scottona**

	EAN Code	Approx. package kg	Pieces per package	Packages per carton	Approx. carton weight (kg)	Shelf life (days)
xxx	xxxxx	xxxx	x	x	x	xx



**Sui ribs sale pepe sv 600gr MM**

	EAN Code	Approx. package kg	Pieces per package	Packages per carton	Approx. carton weight (kg)	Shelf life (days)
76162	8006473906742	0,600	1	8	4,8	21



**Sui ribs paprica sv 600g MM**

	EAN Code	Approx. package kg	Pieces per package	Packages per carton	Approx. carton weight (kg)	Shelf life (days)
76168	8006473906759	0,600	1	8	4,8	21

# Amadori



Our traditional cuts of meat from the Baraka Halal line and other certified halal uncooked and precooked products are for all who respect the traditions of Islamic culture and religion. It is a complete range of halal chicken and turkey-based products, backed by the Amadori guarantee of quality and reliability.



Our Value Chain  
CONTROLLED  
FOOD  
PRODUCTION



# Baraka Halal



**Whole chicken, packaged, Halal** R

UM	EAN Code	Approx. package kg	Pieces per package	Packages per carton	Approx. carton weight (kg)	Shelf life (days)
58915	kg 2230611000000	1,05	1	4	4,2	9

**Whole chicken, packaged, Halal (frozen)** R

UM	EAN Code	Approx. package kg	Pieces per package	Packages per carton	Approx. carton weight (kg)	Shelf life (days)
43232	kg 2230611000000	1,25	1	6	7,5	720

**Whole chicken cf sur std 1300 isl**

UM	EAN Code	Approx. package kg	Pieces per package	Packages per carton	Approx. carton weight (kg)	Shelf life (days)
30412	kg 8006473905110	1,3	1	7	9,1	730



**Chicken leg quarter x 2, Halal** M

UM	EAN Code	Approx. package kg	Pieces per package	Packages per carton	Approx. carton weight (kg)	Shelf life (days)
58916	kg 2230705000000	2,96	8	4	11,84	9



**Sliced chicken breast, Halal** F

UM	EAN Code	Approx. package kg	Pieces per package	Packages per carton	Approx. carton weight (kg)	Shelf life (days)
58918	kg 2311920000000	0,63	7	9	5,67	9

58951	kg 2827472000000	0,63	7	9	5,67	9
-------	------------------	------	---	---	------	---



**Unseparated chicken wings, x 2, packaged, Halal** F

UM	EAN Code	Approx. package kg	Pieces per package	Packages per carton	Approx. carton weight (kg)	Shelf life (days)
58919	kg 2215936000000	0,80	2	8	6,4	9



**Chicken livers** F

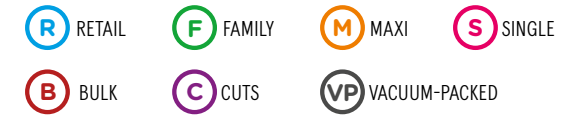
UM	EAN Code	Approx. package kg	Pieces per package	Packages per carton	Approx. carton weight (kg)	Shelf life (days)
58934	kg 2961934000000	0,5	20	6	3	8



**Chicken giblets** F

UM	EAN Code	Approx. package kg	Pieces per package	Packages per carton	Approx. carton weight (kg)	Shelf life (days)
58935	kg 2422273000000	0,5	15	6	3	8

# Baraka Halal



## Whole chicken, Halal



UM	EAN Code	Approx. package kg	Pieces per package	Packages per carton	Approx. carton weight (kg)	Shelf life (days)
58901	kg 1591590000000	10,5	10	1	10,5	12
58930	kg -	10,2	12	1	10,2	12
58903	kg -	1,55	1	8	12,4	12
58902	kg -	1,25	1	10	12,5	12



## Whole chicken, dissected, Halal



UM	EAN Code	Approx. package kg	Pieces per package	Packages per carton	Approx. carton weight (kg)	Shelf life (days)
58909	kg 1591630000000	13,2	6	1	13,2	12



## Sliced turkey breast



UM	EAN Code	Approx. package kg	Pieces per package	Packages per carton	Approx. carton weight (kg)	Shelf life (days)
58920	kg 2522040000000	0,7	7	9	6,3	9



## Male whole turkey, Halal



UM	EAN Code	Approx. package kg	Pieces per package	Packages per carton	Approx. carton weight (kg)	Shelf life (days)
58910	kg -	15	1	1	15	12

## Pollo cosciotto isl



UM	EAN Code	Approx. package kg	Pieces per package	Packages per carton	Approx. carton weight (kg)	Shelf life (days)
58901	kg 1591590000000	10,5	10	1	10,5	12

## Pollo petto/2 disos isl



UM	EAN Code	Approx. package kg	Pieces per package	Packages per carton	Approx. carton weight (kg)	Shelf life (days)
58901	kg 1591590000000	10,5	10	1	10,5	12

## Pol petto extra isl



UM	EAN Code	Approx. package kg	Pieces per package	Packages per carton	Approx. carton weight (kg)	Shelf life (days)
10304		3	5	4	12	12

## Male turkey leg, Halal



UM	EAN Code	Approx. package kg	Pieces per package	Packages per carton	Approx. carton weight (kg)	Shelf life (days)
58913	kg -	8	4	1	8	12

## Turkey leg x 1, Halal, vac pack



UM	EAN Code	Approx. package kg	Pieces per package	Packages per carton	Approx. carton weight (kg)	Shelf life (days)
58933	kg -	2,1	1	5	10,5	20

## Sovrac t.m.s/p s/o sv fra isl



UM	EAN Code	Approx. package kg	Pieces per package	Packages per carton	Approx. carton weight (kg)	Shelf life (days)
58939		1,8	2	6	10,8	20

## Turkey breast, Halal, vac pack



UM	EAN Code	Approx. package kg	Pieces per package	Packages per carton	Approx. carton weight (kg)	Shelf life (days)
58912	kg -	5	1	4	20	20

## Tac m fesa euro 1lobsv fra isl



UM	EAN Code	Approx. package kg	Pieces per package	Packages per carton	Approx. carton weight (kg)	Shelf life (days)
58940	2771050000000	2,2	1	6	13,2	20

## Male turkey drumsticks, Halal



UM	EAN Code	Approx. package kg	Pieces per package	Packages per carton	Approx. carton weight (kg)	Shelf life (days)
58932	kg -	0,8	1	16	12,8	12



# Baraka Halal

- R RETAIL
- F FAMILY
- M MAXI
- S SINGLE
- B BULK
- C CUTS
- VP VACUUM-PACKED



**Chicken sausage, Halal**



UM	EAN Code	Approx. package kg	Pieces per package	Packages per carton	Approx. carton weight (kg)	Shelf life (days)	
56857	kg	-	2,6	34	2	5,2	10



**Turkey skewers with peppers, Halal**



UM	EAN Code	Approx. package kg	Pieces per package	Packages per carton	Approx. carton weight (kg)	Shelf life (days)	
58921	kg	-	2,5	18	2	5	11

**Turkey skewers without peppers, Halal**



UM	EAN Code	Approx. package kg	Pieces per package	Packages per carton	Approx. carton weight (kg)	Shelf life (days)	
10958	kg	-	2,5	18	2	5	11

# Baraka Halal

## Products certified halal in Italy

- R RETAIL
- F FAMILY
- M MAXI
- S SINGLE
- B BULK
- C CUTS
- VP VACUUM-PACKED



**Turkey frankfurter, Halal**



UM	EAN Code	Approx. package kg	Pieces per package	Packages per carton	Approx. carton weight (kg)	Shelf life (days)
42128	nr 8006473901600	0,10	4	25	2,5	150



**Turkey frankfurter, Halal**



UM	EAN Code	Approx. package kg	Pieces per package	Packages per carton	Approx. carton weight (kg)	Shelf life (days)
42138	nr 8006473901198	0,25	3	12	3	150



**Turkey frankfurter, Halal**



UM	EAN Code	Approx. package kg	Pieces per package	Packages per carton	Approx. carton weight (kg)	Shelf life (days)
42139	nr 8006473901525	1,0	12	4	4	150



**Roast turkey, Halal**



UM	EAN Code	Approx. package kg	Pieces per package	Packages per carton	Approx. carton weight (kg)	Shelf life (days)
41298	kg 1062430000000	3	1	2	6	120



**Parizer (cooked chicken sausage) Baraka Halal**



UM	EAN Code	Approx. package kg	Pieces per package	Packages per carton	Approx. carton weight (kg)	Shelf life (days)
42181	nr 8006473903482	0,5	1	12	6	120

# Baraka Halal

## Frozen foods



### Pol alette sf surg isl

UM	EAN Code	Approx. package kg	Pieces per package	Packages per carton	Approx. carton weight (kg)	Shelf life (days)
30401		12	171	1	12	730

### Pol fuso-ala stick sf surg isl

UM	EAN Code	Approx. package kg	Pieces per package	Packages per carton	Approx. carton weight (kg)	Shelf life (days)
30402		12	300	1	12	730

### Bocconcini Halal poll kg2,5 surg

UM	EAN Code	Approx. package kg	Pieces per package	Packages per carton	Approx. carton weight (kg)	Shelf life (days)
30907		2,5	131	1	2,5	450

### Cotoletta imp Halal kg2,5 surg

UM	EAN Code	Approx. package kg	Pieces per package	Packages per carton	Approx. carton weight (kg)	Shelf life (days)
30906		2,5	25	1	2,5	450

### Kebab pol tac kg5 cong

UM	EAN Code	Approx. package kg	Pieces per package	Packages per carton	Approx. carton weight (kg)	Shelf life (days)
63410		5	1	1	5	720

### Kebab pol tac kg7 cong

UM	EAN Code	Approx. package kg	Pieces per package	Packages per carton	Approx. carton weight (kg)	Shelf life (days)
63408		7	1	1	7	540

### Kebab pol tac kg10 cong

UM	EAN Code	Approx. package kg	Pieces per package	Packages per carton	Approx. carton weight (kg)	Shelf life (days)
63411		10	1	1	10	720

### Kebab pol tac kg15 cong

UM	EAN Code	Approx. package kg	Pieces per package	Packages per carton	Approx. carton weight (kg)	Shelf life (days)
63412		15	1	1	15	720

### Kebab pol50% tac50% kg20 cong

UM	EAN Code	Approx. package kg	Pieces per package	Packages per carton	Approx. carton weight (kg)	Shelf life (days)
63413		20	1	1	20	540

### Kebab pol50% tac50% kg25 cong

UM	EAN Code	Approx. package kg	Pieces per package	Packages per carton	Approx. carton weight (kg)	Shelf life (days)
63414		25	1	1	25	540

### Kebab cotto tagliat sur 1kg cf

UM	EAN Code	Approx. package kg	Pieces per package	Packages per carton	Approx. carton weight (kg)	Shelf life (days)
63434	8032909900619	1	1	4	4	365

### Kebab vitel tac kg 5 cong

UM	EAN Code	Approx. package kg	Pieces per package	Packages per carton	Approx. carton weight (kg)	Shelf life (days)
63430		5	1	1	5	720

### Kebab vitel tac kg 10 cong

UM	EAN Code	Approx. package kg	Pieces per package	Packages per carton	Approx. carton weight (kg)	Shelf life (days)
63431		10	1	1	10	720

### Kebab vitel tac kg 15 cong

UM	EAN Code	Approx. package kg	Pieces per package	Packages per carton	Approx. carton weight (kg)	Shelf life (days)
63432		15	1	1	15	540

# Amadori



Our selection of delicious Italian deli meats, backed by Amadori experience and know-how, are made from pork that is selected with care from certified, closely monitored farms. We oversee every phase of production and ensure that every ingredient respects true Italian traditions.

Whether it's prosciutto, ham, salami, mortadella, coppa, soppressata, or regional delicacies like n'duja, you'll taste authentic Italian culinary tradition in each and every slice.

# Corte Antica



## Cured hams

	Description	UM	Approx. package kg	Pieces per package	Packages per carton	Approx. carton weight (kg)	Shelf life (days)
41500	Parma ham, bone-in, 16 months	kg	12,0	1	1	12,0	180
41501	Parma ham, boneless, 16 months	kg	9,5	1	1	9,5	180
41516	Parma ham, boneless, reserve	kg	9,3	1	1	9,3	180
41517	Parma ham, boneless, circle pressed, 16 months	kg	9,5	1	1	9,5	120
41528	Dry-cured ham, Italian, boneless light weight	kg	6,5	1	1	6,5	180
41529	Cured ham, Italian, boneless, circle pressed, light weight	kg	6,5	1	1	6,5	180
41503	Cured ham, Italian, boneless, 12 months	kg	6,8	1	1	6,8	180
41508	Cured ham, Marchigiano, bone-in, 16 months	kg	9,0	1	1	9,0	120
41509	Cured ham, Italian, bone-in, 12 months	kg	8,5	1	1	8,5	740
41518	Cured ham, Italian, boneless, circle pressed	kg	8,1	1	1	8,1	180
41552	Aged, dry-cured sgambato boneless ham	kg	6,5	1	1	6,5	120
41618	<b>Culaccia prosciutto stagionata</b>	kg	6,0	1	1	6,0	720
41504	Cured ham, Duca, boneless, 8 months	kg	6,0	1	1	6,0	180
41519	Cured ham, duca, boneless, circle pressed	kg	6,0	1	1	6,0	180
41586	Cured ham, boneless, squared	kg	6,5	1	1	6,5	180



## Cooked hams

	Description	UM	Approx. package kg	Pieces per package	Packages per carton	Approx. carton weight (kg)	Shelf life (days)
41512	Cooked ham, silver	kg	8,0	1	1	8,0	90
41513	Cooked ham, polyphosphate-free	kg	9,0	1	1	9,0	120
41523	Cooked ham, Premiere top quality	kg	8,0	1	1	8,0	180
41524	Cooked ham, prestige	kg	8,0	1	1	8,0	150
41535	Cooked ham, half	kg	4,1	1	2	8,2	120
41538	Cooked ham	kg	8,2	1	1	8,2	120
41520	Cooked shoulder of ham, rosatella toast	kg	1,5	1	4	6,0	120
41521	Cooked shoulder of ham, rosatella, bottle pressed	kg	8,0	1	2	16,0	120
41525	Cooked shoulder of ham, tris	kg	8,0	1	2	16,0	180

# Corte Antica



## Mortadelle

Description	UM	Approx. package kg	Pieces per package	Packages per carton	Approx. carton weight (kg)	Shelf life (days)
41536 Mortadella le torri	kg	7,5	1	1	7,5	100
41537 Mortadella le torri with pistachio	kg	7,5	1	1	7,5	100
41531 Mortadella duchessa with pistachio	kg	10,0	1	1	10,0	120
41532 Mortadella duchessa	kg	10,0	1	1	10,0	120
41533 Mortadella small 2,5 kg	kg	2,5	1	2	5,0	80



## Coppe

Description	UM	Approx. package kg	Pieces per package	Packages per carton	Approx. carton weight (kg)	Shelf life (days)
41561 Coppa s/v	kg	0,8	1	4	3,1	120
41562 Coppa tipo parma sf	kg	3,8	2	1	3,8	120



## Salami

Description	UM	Approx. package kg	Pieces per package	Packages per carton	Approx. carton weight (kg)	Shelf life (days)
41543 Milano salami, vac pack	kg	3,5	1	1	3,5	120
41544 Hungarian salami, vac pack	kg	3,5	1	1	3,5	120
41553 Salame Aquila	kg	0,4	1	6	2,4	90
41620 Salamino ariccino s/v	kg	3,0	1	2	6,0	120
41540 Nostrano salami, vac pack	kg	0,8	1	3	2,5	90
41541 Salame Napoli	kg	1,0	1	3	3,0	120
41545 Ventricina salami, vac pack	kg	1,5	1	4	6,0	120
41551 Corallina salami, bulk	kg	0,8	1	8	6,5	120
41547 Spicy salami, straight	kg	1,7	2	4	6,9	120
41614 Salame con semi di Finocchio	kg	2,6	1	2	5,1	120
41615 Salame Toscano sf	kg	3,3	1	1	3,3	120

# Corte Antica



## Bacon

Description	UM	Approx. package kg	Pieces per package	Packages per carton	Approx. carton weight (kg)	Shelf life (days)
41572 Bacon (belly), rindless, vac pack	kg	1,8	1	2	3,6	120
41555 Pancet aff cub100+100g atp std	nr	0,2	1	10	2,0	75
41571 Bacon (belly), with neck, rindless, vac pack	kg	2,5	1	2	5,0	120
41573 Bacon (belly), mild, slab, vac pack	kg	1,3	1	4	5,2	120
41574 Bacon (belly), slab, smoked, vac pack	kg	1,3	1	4	5,2	120
41575 Smoked, steamed bacon (belly) - half	kg	2,6	1	2	5,1	120



## Calabrian cold cuts

Description	UM	Approx. package kg	Pieces per package	Packages per carton	Approx. carton weight (kg)	Shelf life (days)
41602 Cured pig's cheek, single, vac pack	kg	1,0	1	4	4,5	120
41603 Calabrian single N'duja ventricina, vac pack	kg	0,6	1	10	5,6	180
41607 Calabrian mild salami, vac pack	kg	0,4	1	10	4,0	180
41608 Calabrian spicy salami, pressed, vac pack	kg	0,4	1	10	4,0	180
41611 Soppressata sv	kg	0,5	1	15	7,5	240
41612 Calabrian spicy salami, pressed, vac pack	kg	2,1	1	4	8,4	180

## Salumi altri

Description	UM	Approx. package kg	Pieces per package	Packages per carton	Approx. carton weight (kg)	Shelf life (days)
41580 Speck a metà s/v 4 mesi +	kg	2,5	1	2	5,0	110
41582 Speck a metà s/v catering	kg	2,5	1	2	4,9	100
36653 Bov Ad Roastbeef sottofesa sv	kg	1,6	1	2	3,2	90
41556 Ciccioli Napoli a ottavi 2,5 k	kg	2,0	1	1	2,0	90
41557 Ciccioli Napoli a fette 200 gr	kg	0,2	10	10	2,0	90
41569 Bresaola di sottofesa sv	kg	1,0	1	2	2,0	110
41581 Bresaola, half, top side (binden)	kg	1,6	1	2	3,2	90
41583 Carpaccio metà sv	kg	1,5	1	2	3,0	180
41585 Lardo suino arom sv	kg	1,0	1	2	2,0	180
41619 Coppa testa s/v	kg	2,5	1	1	2,5	90

# Amadori

[www.amadori.it](http://www.amadori.it)